



BOLTON & MENK, INC.
Consulting Engineers & Surveyors

2006 Utility & Street Improvements Construction Newsletter

◆ CURRENT CONSTRUCTION ACTIVITIES

- ◆ The contractor is currently replacing the watermain on Park Lane. They will continue with watermain construction up to the intersection of Park Lane and Morningside. The contractor intends to have the watermain constructed up to the identified intersection by June 9th. They will then replace the sanitary sewer from Morningside and Park to the phase 1 limits and the cul-de-sac during the week of June 12th through the 17th. During the week of June 19th, the contractor will replace watermain in the same area as the sanitary sewer replacement. Please see the attached map for further definition of the schedule and affected areas.



- ◆ Center Point Energy has indicated that they will be done with mainline gas line replacement about June 13th. They will begin service replacement, which should take 3 to 4 weeks to complete. The service replacement may require them to work outside the right of way. Any turf disturbance outside the right of way will be repaired by Center Point Energy.

◆ PRIVATE SERVICE LINE REPLACEMENT

- ◆ Given the age of most homes in the project area, there is a concern regarding lead water services and deteriorated, leaking sanitary sewer services. As part of the construction project, all sewer and water services will be replaced from the sewer or water main in the roadway to the property line. Private service lines will be inspected during construction to determine whether there are any deficiencies such as lead water services or deteriorated, leaking sewer services. If deficiencies are found, the homeowner will be notified and required to replace the service at the homeowner's cost. A licensed contractor will be required to perform the work beyond the property line.
- ◆ A number of residents have contacted City Hall regarding sprinkler systems and underground pet fences. Please contact Brandon Fitzpatrick, the site representative, at (507)-380-9943 for assistance in locating these items and coordination with the contractor.

◆ PROJECT HISTORY AND TIMELINE

◆ The schedule for Phase One (1) of the construction project is as follows: Installation of watermain and sanitary sewer from May 31st to June 23rd, installation of utility services from June 26th to the 30th, installation of storm sewer is scheduled from June 30th to July 3rd. A second crew will be brought in for street and surface work, from July 3rd to the 10th. Please see the attached schedule, submitted by Contractor's Edge, for the remainder of the project phases.

◆ PARKING, ACCESS, DETOURS, AND WORKING HOURS

◆ The contractor and City are aware of some special access needs. Every attempt will be made to accommodate these access requests. If you have any special concerns or access needs, please contact Brandon Fitzpatrick at 507-380-9943 for assistance with access issues.

◆ Parking within the project limits along Park Lane, Morningside, and Central Street will be restricted during construction in each area. Residents are encouraged to utilize side streets for parking during construction. The phasing of the project should allow for parking closer to your house when there is construction activity directly in front of your house. Direct access to driveways will be restricted during construction activity.

◆ Traffic on all streets will be detoured for a period of time at some point during construction. Local traffic will be allowed to use the affected streets to gain access to their homes during the detour.

◆ Access will be maintained for emergency vehicles.

◆ WORK TO BE COMPLETED THIS YEAR

◆ All utilities, curb and gutter, and the first layer of bituminous is scheduled to be completed by the end of November 2006. Private service lines will be inspected during construction to determine whether there are any deficiencies such as lead water services or deteriorated, leaking sewer services. If deficiencies are found, the homeowner will be notified and required to replace the deteriorated service at the homeowners cost by November 30, 2006. The bituminous wear course will be completed by June 2007.

◆ PROJECT SAFETY

- The general contractor, Contractor's Edge is responsible for safety within the construction limits. Construction signage, barricades, cones, and temporary fencing will be used to delineate hazardous areas, however, residents should be aware that construction sites in general are dangerous areas. Obey construction signage and stay away from active construction areas. Parents should remind their children not to play within the construction limits both during and after construction hours.

◆ **MAIL DELIVERY**

◆ During construction, mailboxes will be relocated to common areas on the side streets where residents and postal employees can easily access them. These locations will be identified once the contractor's construction sequence has been determined. Notification of the new locations will be provided to residents once the locations have been determined.



◆ **PROJECT NEWSLETTER**

- ◆ This bi-weekly newsletter will be posted on Bolton & Menk, Inc.'s website. The website address is as follows:
- ◆ Bolton & Menk, Inc. – www.bolton-menk.com (click on the Clients Zone link and then on the City of LeSueur link)
- ◆ If you would like to receive this newsletter by e-mail, please send an e-mail to Owen Todd at Owento@bolton-menk.com. Those residents along the project, who do not have access to the Internet or e-mail, will continue to have the newsletter mailed out to them.

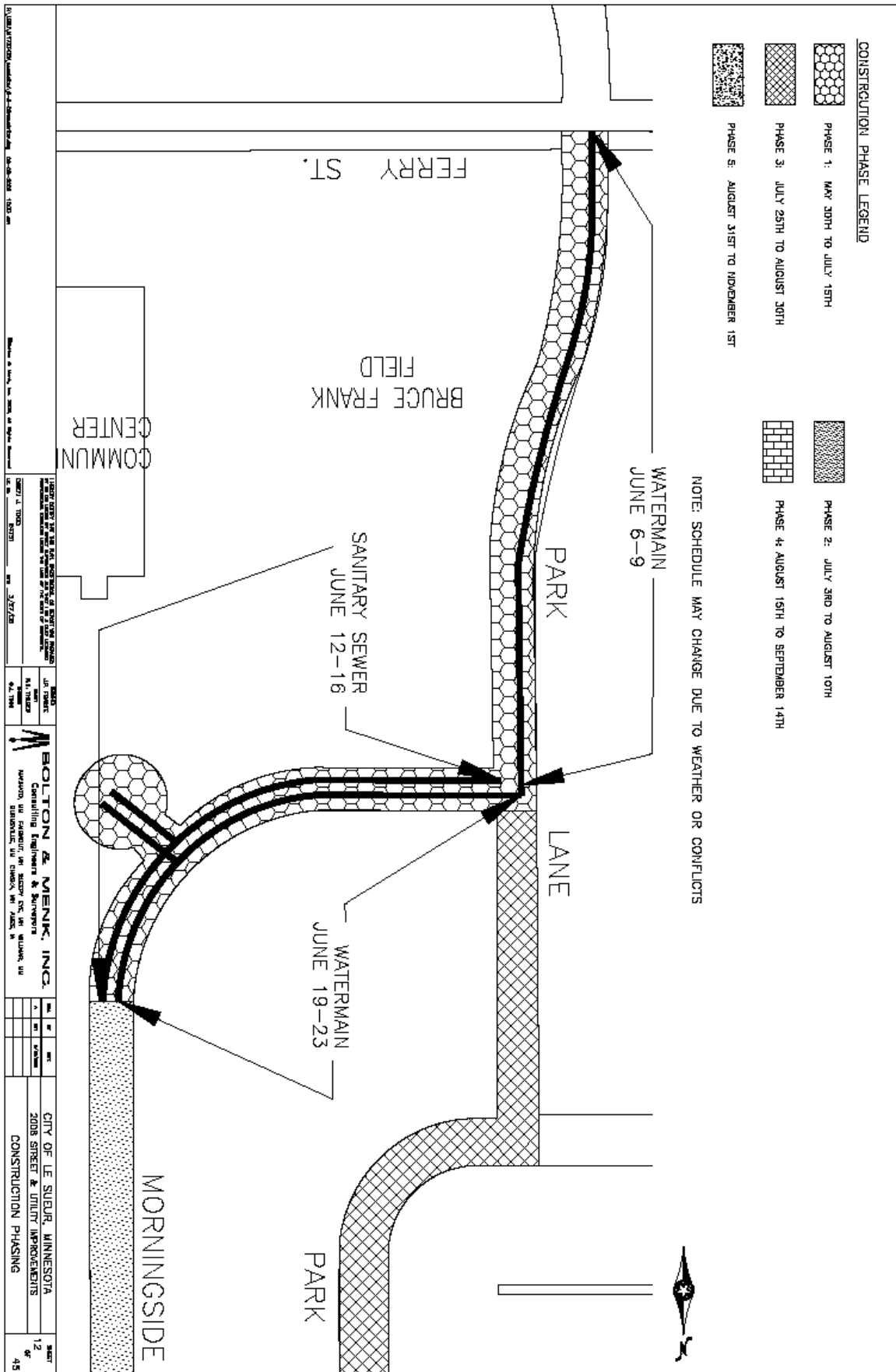
◆ **PROJECT CONTACTS**

- ◆ The contractor for the project is Contractor's Edge
 - ◆ Chad Wigham, from Contractor's Edge will be the project manager for the contractor. Chad can be reached through Contractor's edge's office at 507-388-8601. However, we encourage those with project concerns to direct them through the engineering contacts.
- ◆ The engineer for the project is Bolton & Menk, Inc.
 - ◆ Brandon Fitzpatrick from Bolton & Menk will be on site representing the City during construction. He will be providing construction observation and coordination. You may approach him on site or call him at 507-380-9943 with any questions or comments you may have.
 - ◆ Owen Todd from Bolton & Menk is the project manager and consultant city engineer for LeSueur. You may call Owen at 507-625-4171, or e-mail him at owento@boltonmenk.com.



203 S. Second St.
 PO Box 176
 LeSueur, MN 56058-0176
 507-665-6401

1960 Premier Drive
 Mankato, MN 56001
 507-625-4171



1. DATE: 06/08/2006 2. DRAWING NO.: 06-06-0001 3. SHEET NO.: 12 OF 45	
4. PROJECT: BOLTON & MENK, INC. CONSULTING ENGINEERS & SURVEYORS 2008 STREET & UTILITY IMPROVEMENTS CONSTRUCTION PHASING	5. CITY OF LE SUEUR, MINNESOTA 2008 STREET & UTILITY IMPROVEMENTS CONSTRUCTION PHASING
6. DESIGNER: J. L. THOMAS 7. DATE: 06/08/2006 8. SCALE: AS SHOWN	9. CHECKED: M. J. THOMAS 10. DATE: 06/08/2006