

Public Hearing for Diamond Lake Low-Pressure Wastewater Collection System



7:00 p.m.

May 21, 2010



BOLTON & MENK, INC.
Consulting Engineers & Surveyors

Items to be Presented

- Project Summary
- Bid Results
- Project Contractors
- Estimated Costs
- Estimated Assessments
- Project Schedule



BOLTON & MENK, INC.
Consulting Engineers & Surveyors

Project Summary

Diamond Lake Service Connections

- 366 Tier I
- 27 Tier II
- 319 Estimated Hook-ups (80%)



BOLTON & MENK, INC.
Consulting Engineers & Surveyors

Project Summary

Low Pressure System Components

- Low-Pressure Common Forcemain
- Trunk Wastewater Improvements
- Individual Low-Pressure System



BOLTON & MENK, INC.
Consulting Engineers & Surveyors

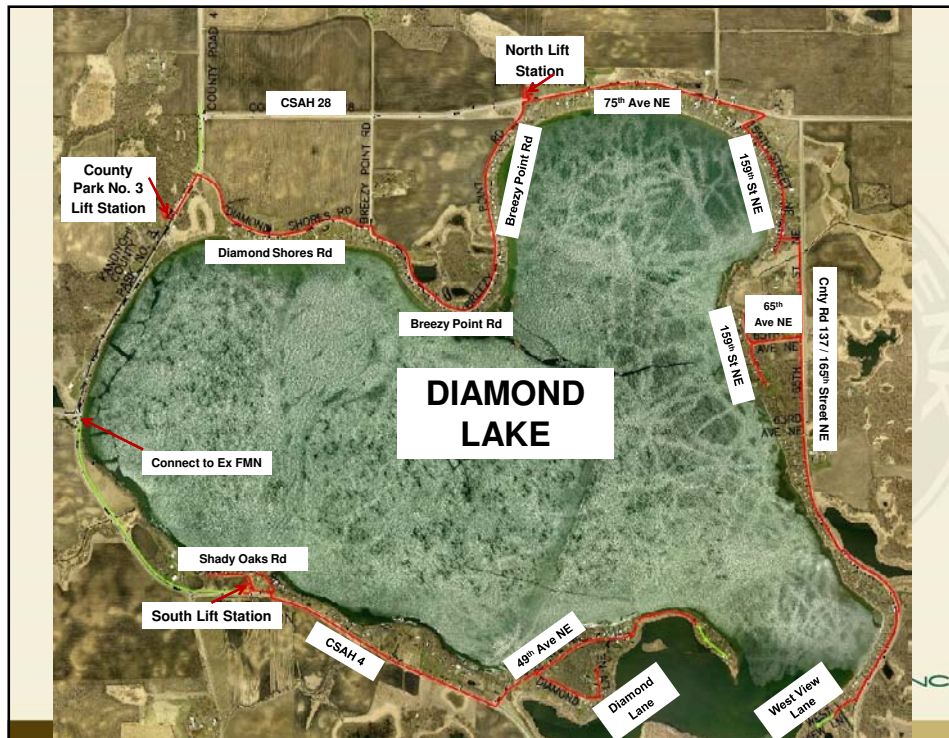
Project Summary

Low-Pressure Common Forcemain

- 2 Lift Stations
- 2 Duplex Lift Stations
- 8 Miles 2 To 6 inch Common Lines
- 5.5 Miles 1.25 inch Service Lateral Lines
- Turf Restoration



BOLTON & MENK, INC.
Consulting Engineers & Surveyors



Project Summary

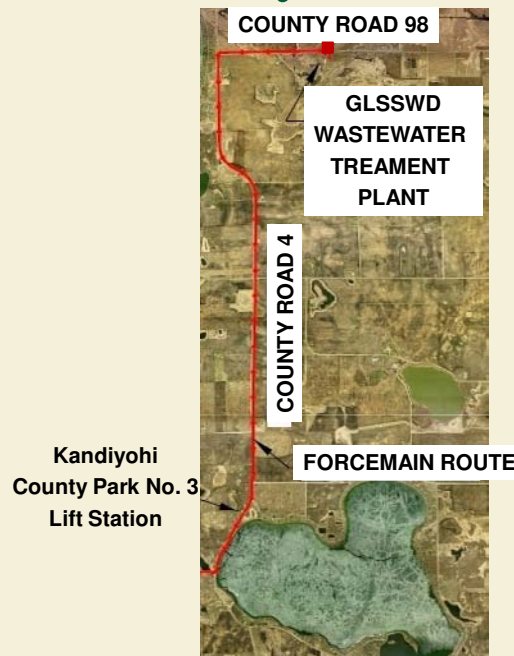
Trunk Wastewater Improvements

- City of Kandiyohi Project
 - 2 Lift Stations
 - 13 Miles of 8-inch Forcemain
 - Connect at Green Lake WWTP



BOLTON & MENK, INC.
Consulting Engineers & Surveyors

Project Summary



Project Summary



Project Summary

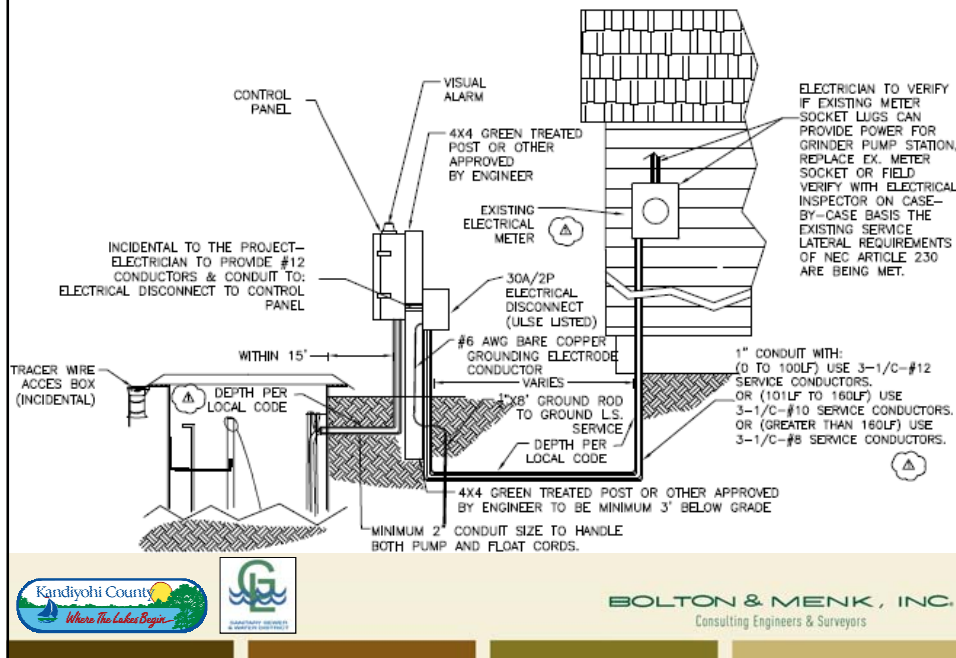
Individual Low-Pressure System

- Grinder Pump (GP), Basin & Control Panel
- Service lateral & sewer service
- Abandon septic tank
- Metering Device
- Turf Restoration



BOLTON & MENK, INC.
Consulting Engineers & Surveyors

Project Summary



Bid Results & Project Contractor

- **Total Amount Bid**
 - **\$4,179,340.04**
- **General Contractor**
 - **Ellingson Drainage, Inc.**
 - West Concord, MN**



Estimated Cost Breakdown

Proposed Project Category	Estimated Cost
Base (Common Line) Improvements	\$6,580.00
Individual Service Improvements	\$ 9,685.00
Total Project Cost	\$16,265.00



BOLTON & MENK, INC.
Consulting Engineers & Surveyors

Estimated Assessments

Proposed Project Category	Annual Assessment
Base Assessment (Begins 2011)	\$ 528.00
Individual Assessment (Begins 2012)	\$ 778.00
Total Assessment	\$1,306.00

Assessments based on 5% interest rate, low interest financing may be available



BOLTON & MENK, INC.
Consulting Engineers & Surveyors

GLSSWD Operations Costs

- **User Rates**
 - **Base Fee- \$20.40/month**
 - **Usage Rate \$4.24/1,000 gallons**
- **Annual Maintenance Fee (Begins 2011)**
 - **\$60/year**
- **Billing Fee- \$2.18/month**
- **Estimated Electrical- \$3.00/month**



BOLTON & MENK, INC.
Consulting Engineers & Surveyors

Project Schedule

- **Award Project - May 21, 2010**
- **Construction – June 2010**
- **Assessment Hearing—**
 - **Base Assessment- October 2010**
 - **Service Assessment- October 2011**



BOLTON & MENK, INC.
Consulting Engineers & Surveyors

Bolton & Menk, Inc. Contacts

Office: 320-231-3956

- Brad DeWolf, Project Manager- 320-212-5002
- Dean Helstrom, Project Engineer- 320-905-1311
- Del Vulcan, Field Representative- 320-894-3696



BOLTON & MENK, INC.
Consulting Engineers & Surveyors

Project Schedule

➤ Project Updates-

- www.bolton-menk.com
 - Click on Client Zone
 - Click on Kandiyohi County
 - Click on Diamond Lake
 - Click on Project Update



BOLTON & MENK, INC.
Consulting Engineers & Surveyors

BOLTON & MENK, INC.
Consulting Engineers & Surveyors




SERVICES | WHO WE ARE | NEWS | BIDS | CAREERS | CONTACT US

Client Zone | Resident Zone | Invoice Payment

about us

Bolton & Menk, Inc. is an eminently qualified firm providing professional engineering and surveying services to public clients in the Upper Midwest and private clients throughout the world.

services

- Civil & Municipal Engineering
- Water & Wastewater Treatment
- Transportation Engineering
- Aviation Services
- Water Resources Engineering
- Environmental Reviews
- Cultural Resource Management
- Land Surveying
- GIS & Mapping
- Energy Sector Services

what's new

- Bolton & Menk Adds Experienced Project Manager to the Ames Office
- ENR Ranks Bolton & Menk in Top 500 Engineering and Surveying Firms in the United States
- Sign up to receive our electronic newsletter
- more...



DESIGNING FOR A BETTER TOMORROW

Corporate Office: 1960 Premier Drive | Mankato, MN 56001 | 507-625-4171 | FAX: 507-625-4177

BOLTON & MENK, INC.
Consulting Engineers & Surveyors



SERVICES | WHO WE ARE | NEWS | BIDS | CAREERS | CONTACT US

Client Zone | Resident Zone | Invoice Payment

Mapping

Access On-Line Mapping System

Install Mapping System Plugin

Please Note: First time users must install a plugin to access the On-Line Mapping System. Select the link above to install. Select the default settings when installing. A typical installation takes approximately 2 to 3 minutes.

Bolton & Menk Services
[Civil & Municipal Engineering](#)
[Water & Wastewater Treatment](#)
[Transportation Engineering](#)
[Aviation Services](#)
[Water Resources Engineering](#)
[Environmental Reviews](#)
[Cultural Resource Management](#)
[Land Surveying](#)
[GIS & Mapping](#)

[Bolton & Menk > Clients](#)

Client Zone

Projects

- [City of Waconia, MN — TH 284/CSAH 10 Roundabout & Lift Station Relocation](#)
- [City of Waconia, MN — Sparrow Road Traffic Calming](#)
- [City of Madison, MN](#)
- [City of Mapleton, MN](#)
- [Empire Township, Dakota County](#)
 - [Environmental Assessment Worksheet](#)
 - [Final EIS Supporting Documents](#)
- [Lake Washington Sanitary District](#)
- [City of Eagle Lake](#)
 - [Comprehensive Infrastructure Planning Study](#)
- [Kandiyohi County](#)
- [Minnesota River Valley Public Utilities Commission — Le Sueur/Henderson](#)

DESIGNING FOR A BETTER TOMORROW

Corporate Office: 1960 Premier Drive | Mankato, MN 56001 | 507-625-4171 | FAX: 507-625-4177



Kandiyohi County

Henderson, George and Nest Lake Project

- [Grinder Pump - Trouble Shooting Guide](#)
- [Licensed Contractors](#)

Diamond Lake Project Update

- [Diamond Lake Project Newsletter](#)
- [Notice of Public Hearings & Informational Meetings](#)

Engineer's Survey and Examination Report to Kandiyohi County for Providing Wastewater System Improvements for:

- [Diamond Lake](#)

DESIGNING FOR A BETTER TOMORROW

Corporate Office: 1960 Premier Drive | Mankato, MN 56001 | 507-625-4171 | FAX: 507-625-4177