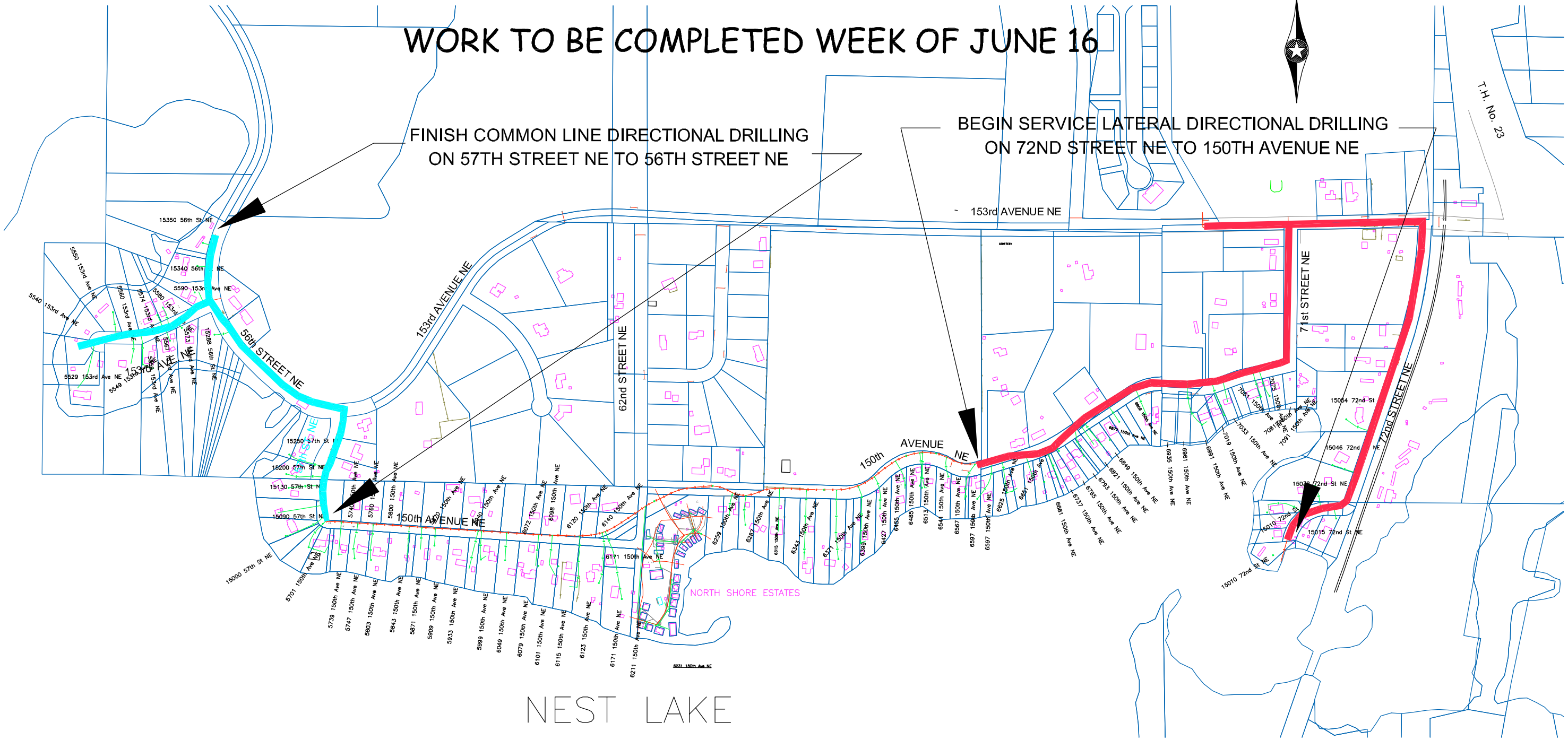


# WORK TO BE COMPLETED WEEK OF JUNE 16



FINISH COMMON LINE DIRECTIONAL DRILLING  
ON 57TH STREET NE TO 56TH STREET NE

BEGIN SERVICE LATERAL DIRECTIONAL DRILLING  
ON 72ND STREET NE TO 150TH AVENUE NE

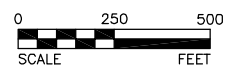


NEST LAKE

NORTH SHORE ESTATES

- LEGEND**
- EXISTING WELL LOCATION WITH 20ft & 50ft SETBACK REQUIREMENTS
  - EXISTING TRUNK FORCEMAIN
  - PROPOSED PRESSURE LATERAL
  - PROPOSED FORCEMAIN

- LEGEND for TYPE of WORK**
- COMMON LINE
  - SERVICE LATERAL
  - GRINDER PUMP
  - FINAL HOOK-UP



**BOLTON & MENK, INC.**  
Consulting Engineers & Surveyors  
MANKATO, MN FAIRMONT, MN SLEEPY EYE, MN WILLMAR, MN  
BURNSVILLE, MN CHASKA, MN RAMSEY, MN AMES, IA

KANDIYOHI COUNTY, MINNESOTA  
WASTEWATER COLLECTION SYSTEM  
FOR HENDERSON, GEORGE & NEST LAKES  
NEST LAKE NORTH PROJECT UPDATE MAP

SHEET  
**Fig.1**

H:\KACO\W1339533\CAD\LakeLayouts\NestLakeNorthLAYOUT.dwg

©Bolton & Menk, Inc. 2008, All Rights Reserved