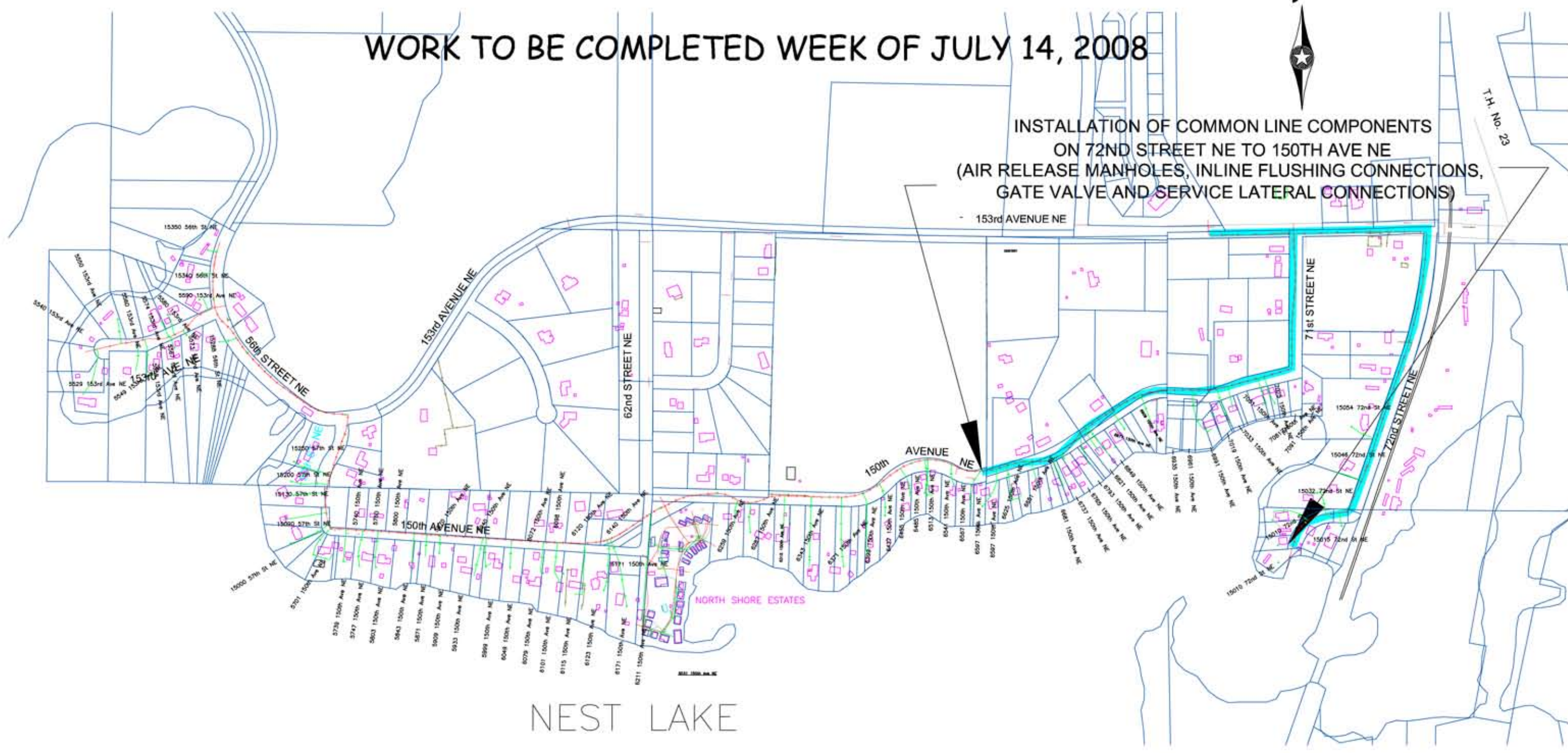


WORK TO BE COMPLETED WEEK OF JULY 14, 2008



INSTALLATION OF COMMON LINE COMPONENTS  
ON 72ND STREET NE TO 150TH AVE NE  
(AIR RELEASE MANHOLES, INLINE FLUSHING CONNECTIONS,  
GATE VALVE AND SERVICE LATERAL CONNECTIONS)

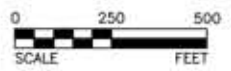


NEST LAKE

**FUTURE WORK SCHEDULE NEST LAKE NORTH SHORE**  
BEGIN GRINDER PUMP INSTALLATION WEEK OF JULY 21, 2008  
BEGIN FINAL HOOK-UPS WEEK OF JULY 28, 2008

- LEGEND**
- EXISTING WELL LOCATION WITH 20ft & 50ft SETBACK REQUIREMENTS
  - EXISTING TRUNK FORCEMAIN
  - PROPOSED PRESSURE LATERAL
  - PROPOSED FORCEMAIN

- LEGEND for TYPE of WORK**
- COMMON LINE
  - SERVICE LATERAL
  - GRINDER PUMP
  - FINAL HOOK-UP



**BOLTON & MENK, INC.**  
Consulting Engineers & Surveyors  
MANKATO, MN FAIRMONT, MN SLEEPY EYE, MN WILLMAR, MN  
BURNSVILLE, MN CHASKA, MN RAMSEY, MN AMES, IA

KANDIYOHI COUNTY, MINNESOTA  
WASTEWATER COLLECTION SYSTEM  
FOR HENDERSON, GEORGE & NEST LAKES  
NEST LAKE NORTH PROJECT UPDATE MAP

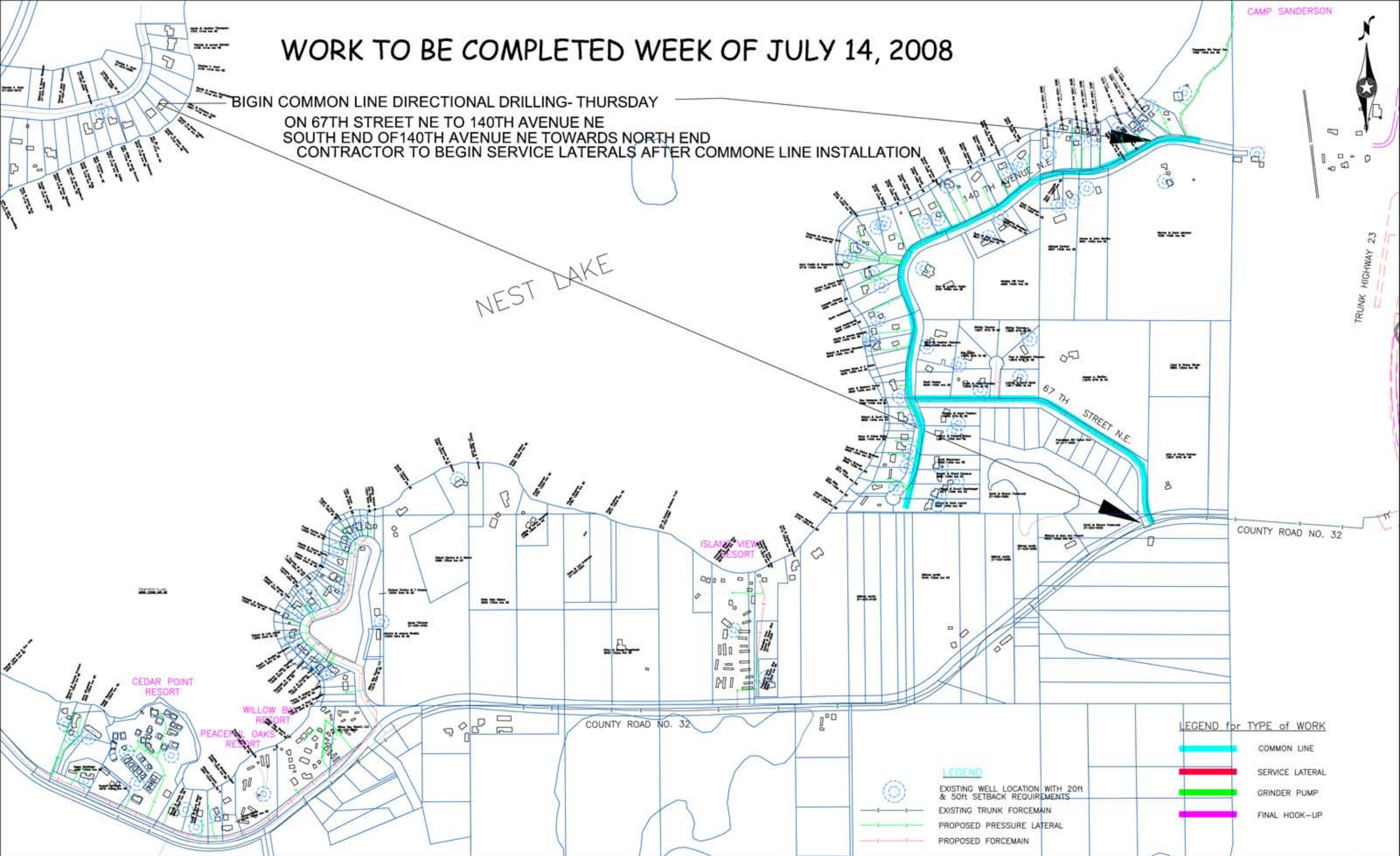
SHEET  
Fig.1

H:\KADO\W1339533\CAD\Layouts\NestLakeNorth\LAYOUP.dwg

©Bolton & Menk, Inc. 2008. All Rights Reserved

# WORK TO BE COMPLETED WEEK OF JULY 14, 2008

BIGIN COMMON LINE DIRECTIONAL DRILLING- THURSDAY  
ON 67TH STREET NE TO 140TH AVENUE NE  
SOUTH END OF 140TH AVENUE NE TOWARDS NORTH END  
CONTRACTOR TO BEGIN SERVICE LATERALS AFTER COMMON LINE INSTALLATION



TRUNK HIGHWAY 23

COUNTY ROAD NO. 32

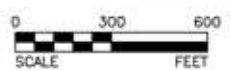
COUNTY ROAD NO. 32

### LEGEND

- EXISTING WELL LOCATION WITH 20ft & 50ft SETBACK REQUIREMENTS
- EXISTING TRUNK FORCEMAIN
- PROPOSED PRESSURE LATERAL
- PROPOSED FORCEMAIN

### LEGEND for TYPE of WORK

- COMMON LINE
- SERVICE LATERAL
- GRINDER PUMP
- FINAL HOOK-UP



**BOLTON & MENK, INC.**  
 Consulting Engineers & Surveyors  
 MANKATO, MN FAIRMONT, MN SLEEPY EYE, MN WILLMAR, MN  
 BURNSVILLE, MN CHASKA, MN RAMSEY, MN AMES, IA

KANDIYOHI COUNTY, MINNESOTA  
 WASTEWATER COLLECTION SYSTEM  
 FOR HENDERSON, GEORGE & NEST LAKES  
 NEST LAKE SOUTH LAYOUT MAP