

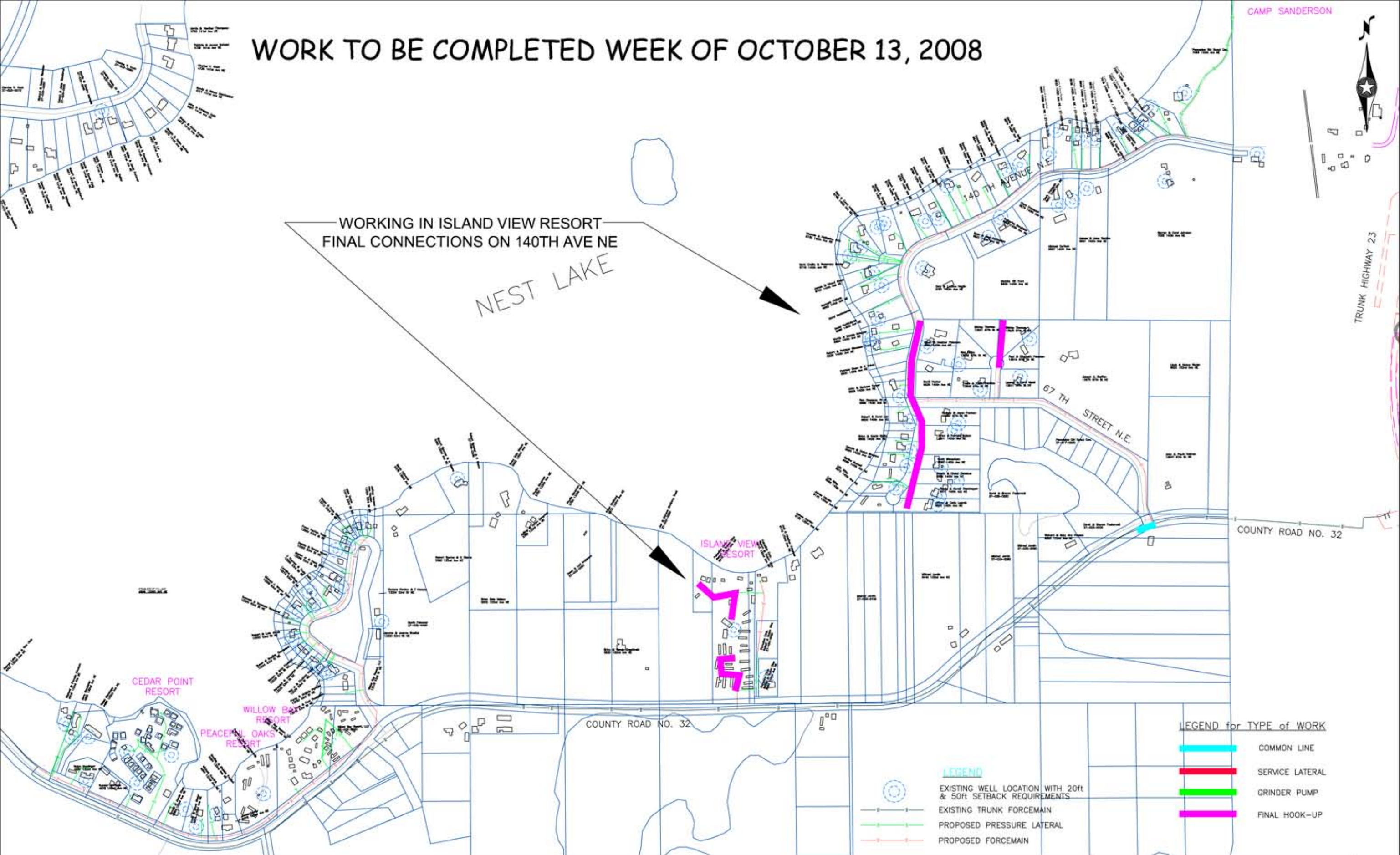
# WORK TO BE COMPLETED WEEK OF OCTOBER 13, 2008

CAMP SANDERSON



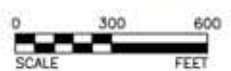
WORKING IN ISLAND VIEW RESORT  
FINAL CONNECTIONS ON 140TH AVE NE

NEST LAKE



- LEGEND**
- EXISTING WELL LOCATION WITH 20ft & 50ft SETBACK REQUIREMENTS
  - EXISTING TRUNK FORCEMAIN
  - PROPOSED PRESSURE LATERAL
  - PROPOSED FORCEMAIN

- LEGEND for TYPE of WORK**
- COMMON LINE
  - SERVICE LATERAL
  - GRINDER PUMP
  - FINAL HOOK-UP



**BOLTON & MENK, INC.**  
Consulting Engineers & Surveyors  
MANKATO, MN FAIRMONT, MN SLEEPY EYE, MN WILLMAR, MN  
BURNSVILLE, MN CHASKA, MN RAMSEY, MN AMES, IA

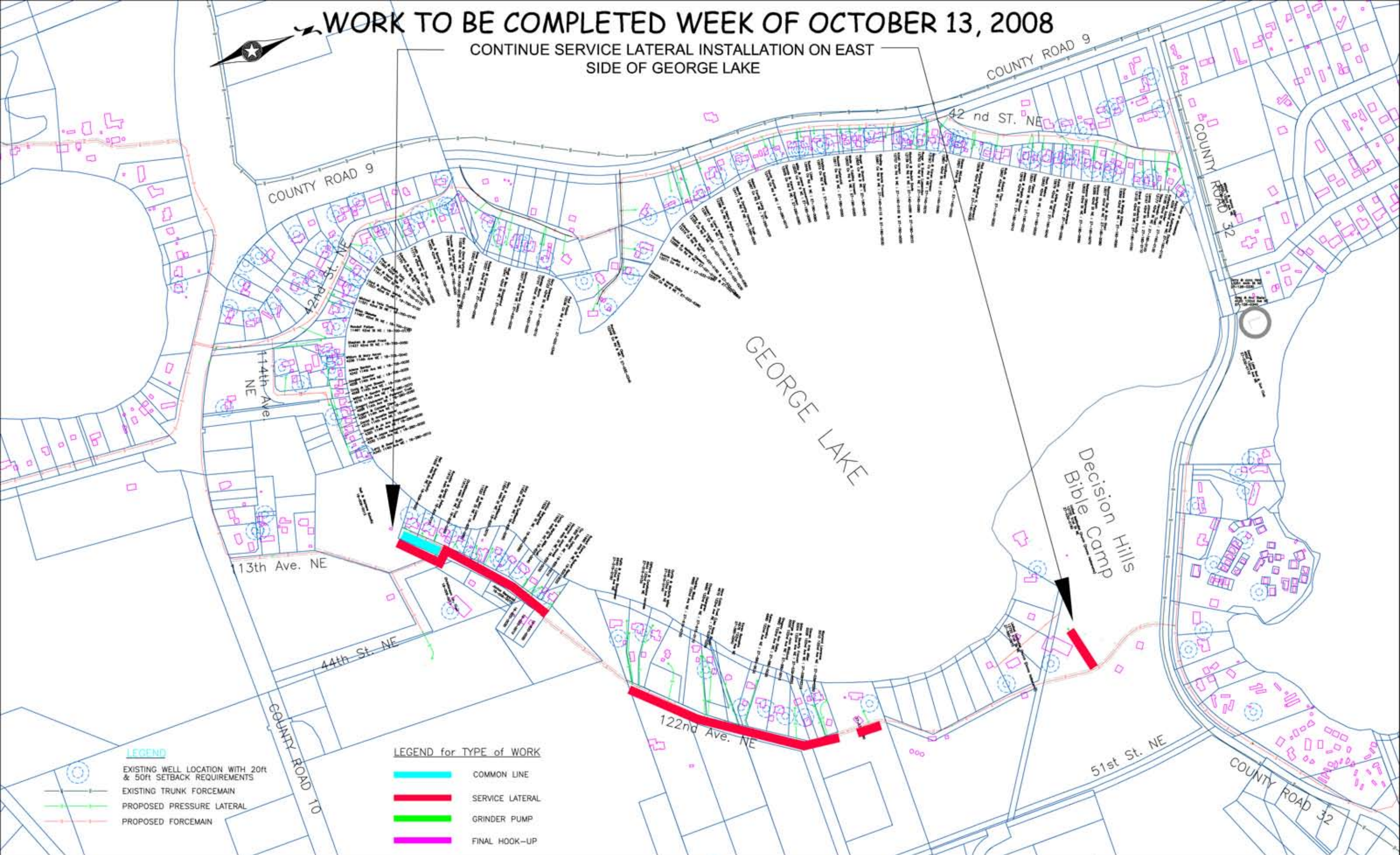
KANDIYOHI COUNTY, MINNESOTA  
WASTEWATER COLLECTION SYSTEM  
FOR HENDERSON, GEORGE & NEST LAKES  
NEST LAKE SOUTH LAYOUT MAP

SHEET  
Fig.2

H:\VACO\W1359333\CAD\Layouts\NestLakeSouth\AY017.dwg ©Bolton & Menk, Inc. 2008. All Rights Reserved

# WORK TO BE COMPLETED WEEK OF OCTOBER 13, 2008

CONTINUE SERVICE LATERAL INSTALLATION ON EAST SIDE OF GEORGE LAKE

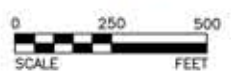


**LEGEND**

- EXISTING WELL LOCATION WITH 20ft & 50ft SETBACK REQUIREMENTS
- EXISTING TRUNK FORCEMAIN
- PROPOSED PRESSURE LATERAL
- PROPOSED FORCEMAIN

**LEGEND for TYPE of WORK**

- COMMON LINE
- SERVICE LATERAL
- GRINDER PUMP
- FINAL HOOK-UP



**BOLTON & MENK, INC.**  
 Consulting Engineers & Surveyors  
 MANKATO, MN FAIRMONT, MN SLEEPY EYE, MN WILLMAR, MN  
 BURNSVILLE, MN CHASKA, MN RAMSEY, MN AMES, IA

KANDIYOHI COUNTY, MINNESOTA  
 WASTEWATER COLLECTION SYSTEM  
 FOR HENDERSON, GEORGE & NEST LAKES  
 GEORGE LAKE LAYOUT

SHEET  
**Fig.2**