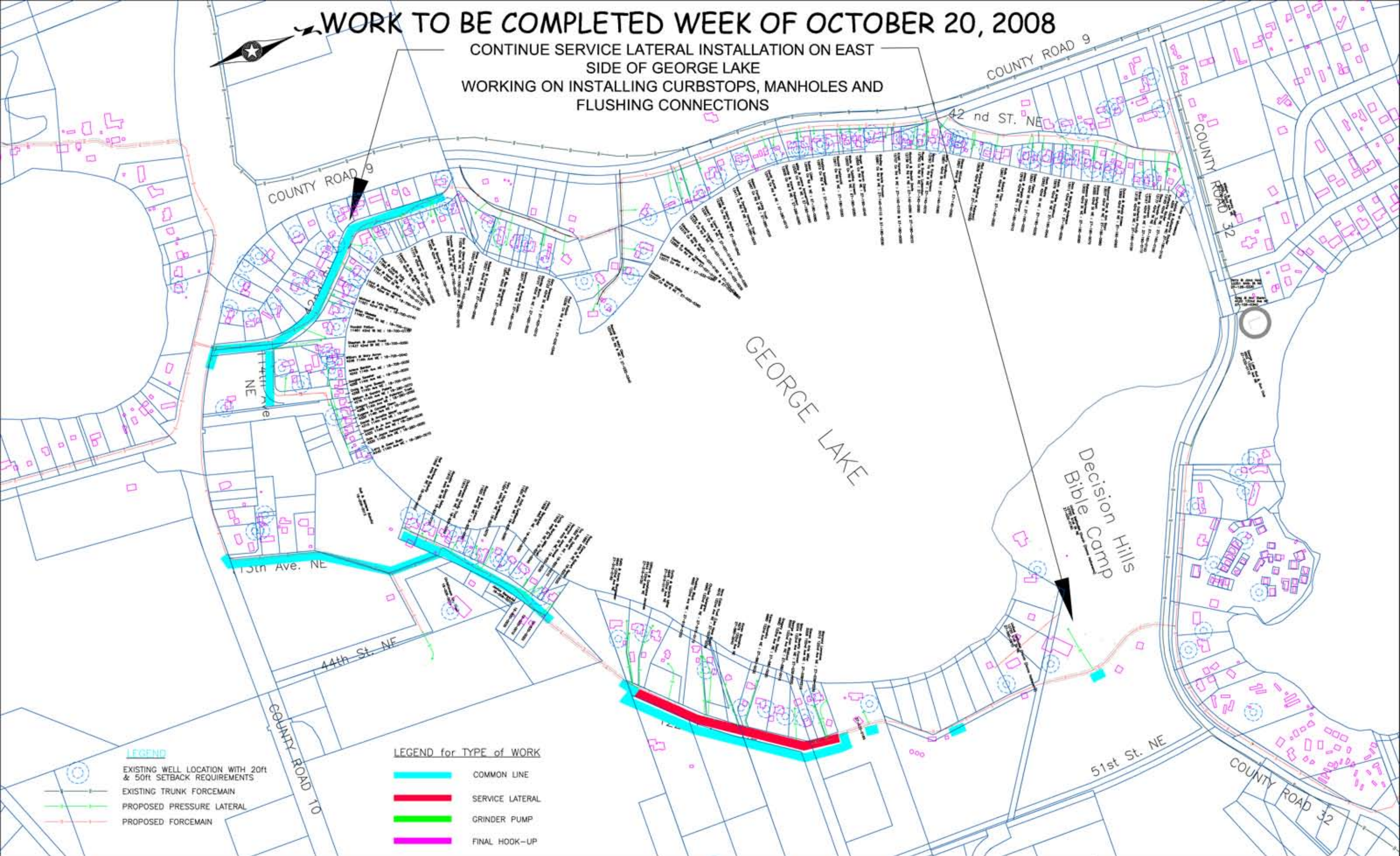


WORK TO BE COMPLETED WEEK OF OCTOBER 20, 2008

CONTINUE SERVICE LATERAL INSTALLATION ON EAST SIDE OF GEORGE LAKE
 WORKING ON INSTALLING CURBSTOPS, MANHOLES AND FLUSHING CONNECTIONS

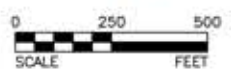


LEGEND

- EXISTING WELL LOCATION WITH 20ft & 50ft SETBACK REQUIREMENTS
- EXISTING TRUNK FORCEMAIN
- PROPOSED PRESSURE LATERAL
- PROPOSED FORCEMAIN

LEGEND for TYPE of WORK

- COMMON LINE
- SERVICE LATERAL
- GRINDER PUMP
- FINAL HOOK-UP



BOLTON & MENK, INC.
 Consulting Engineers & Surveyors
 MANKATO, MN FAIRMONT, MN SLEEPY EYE, MN WILLMAR, MN
 BURNSVILLE, MN CHASKA, MN RAMSEY, MN AMES, IA

KANDIYOHI COUNTY, MINNESOTA
 WASTEWATER COLLECTION SYSTEM
 FOR HENDERSON, GEORGE & NEST LAKES
 GEORGE LAKE LAYOUT

SHEET
Fig.2

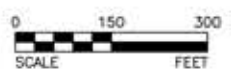
WORK TO BE COMPLETED WEEK OF OCTOBER 20, 2008

DRILLING IN SERVICE LATERALS
INSTALLING MANHOLES, CURBSTOPS
AND FLUSHING CONNECTIONS



- LEGEND**
- EXISTING WELL LOCATION WITH 20ft & 50ft SETBACK REQUIREMENTS
 - EXISTING TRUNK FORCEMAIN
 - PROPOSED PRESSURE LATERAL
 - PROPOSED FORCEMAIN

- LEGEND for TYPE of WORK**
- COMMON LINE
 - SERVICE LATERAL
 - GRINDER PUMP
 - FINAL HOOK-UP



BOLTON & MENK, INC.
Consulting Engineers & Surveyors
MANKATO, MN FAIRMONT, MN SLEEPY EYE, MN WILLMAR, MN
BURNSVILLE, MN CHASKA, MN RAMSEY, MN AMES, IA

KANDIYOHI COUNTY, MINNESOTA
WASTEWATER COLLECTION SYSTEM
FOR HENDERSON, GEORGE & NEST LAKES
HENDERSON LAKE LAYOUT

SHEET
Fig.1