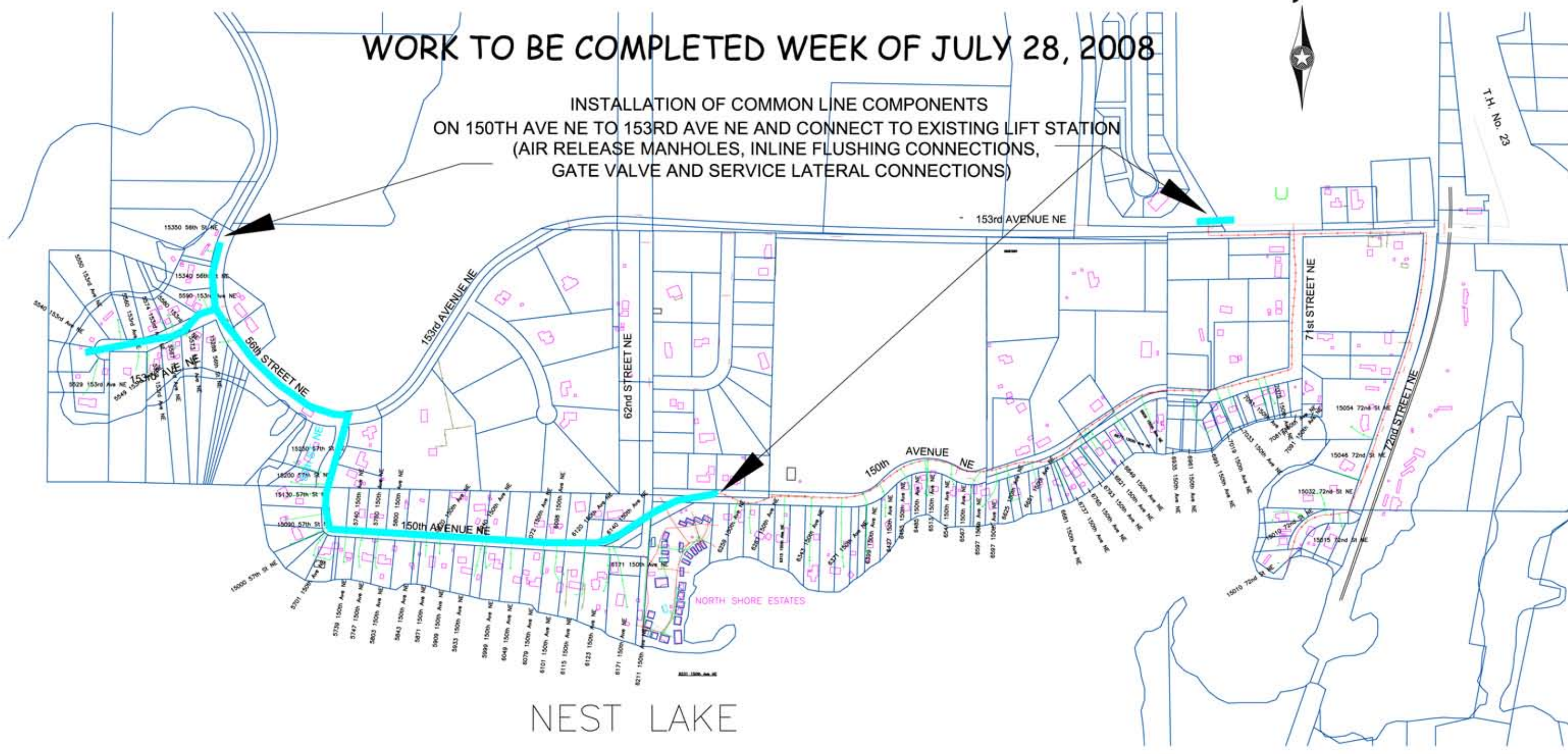


WORK TO BE COMPLETED WEEK OF JULY 28, 2008

INSTALLATION OF COMMON LINE COMPONENTS
ON 150TH AVE NE TO 153RD AVE NE AND CONNECT TO EXISTING LIFT STATION
(AIR RELEASE MANHOLES, INLINE FLUSHING CONNECTIONS,
GATE VALVE AND SERVICE LATERAL CONNECTIONS)



FUTURE WORK SCHEDULE NEST LAKE NORTH SHORE
BEGIN GRINDER PUMP INSTALLATION WEEK OF AUGUST 4TH, 2008

- LEGEND**
- EXISTING WELL LOCATION WITH 20ft & 50ft SETBACK REQUIREMENTS
 - EXISTING TRUNK FORCEMAIN
 - PROPOSED PRESSURE LATERAL
 - PROPOSED FORCEMAIN

- LEGEND for TYPE of WORK**
- COMMON LINE
 - SERVICE LATERAL
 - GRINDER PUMP
 - FINAL HOOK-UP

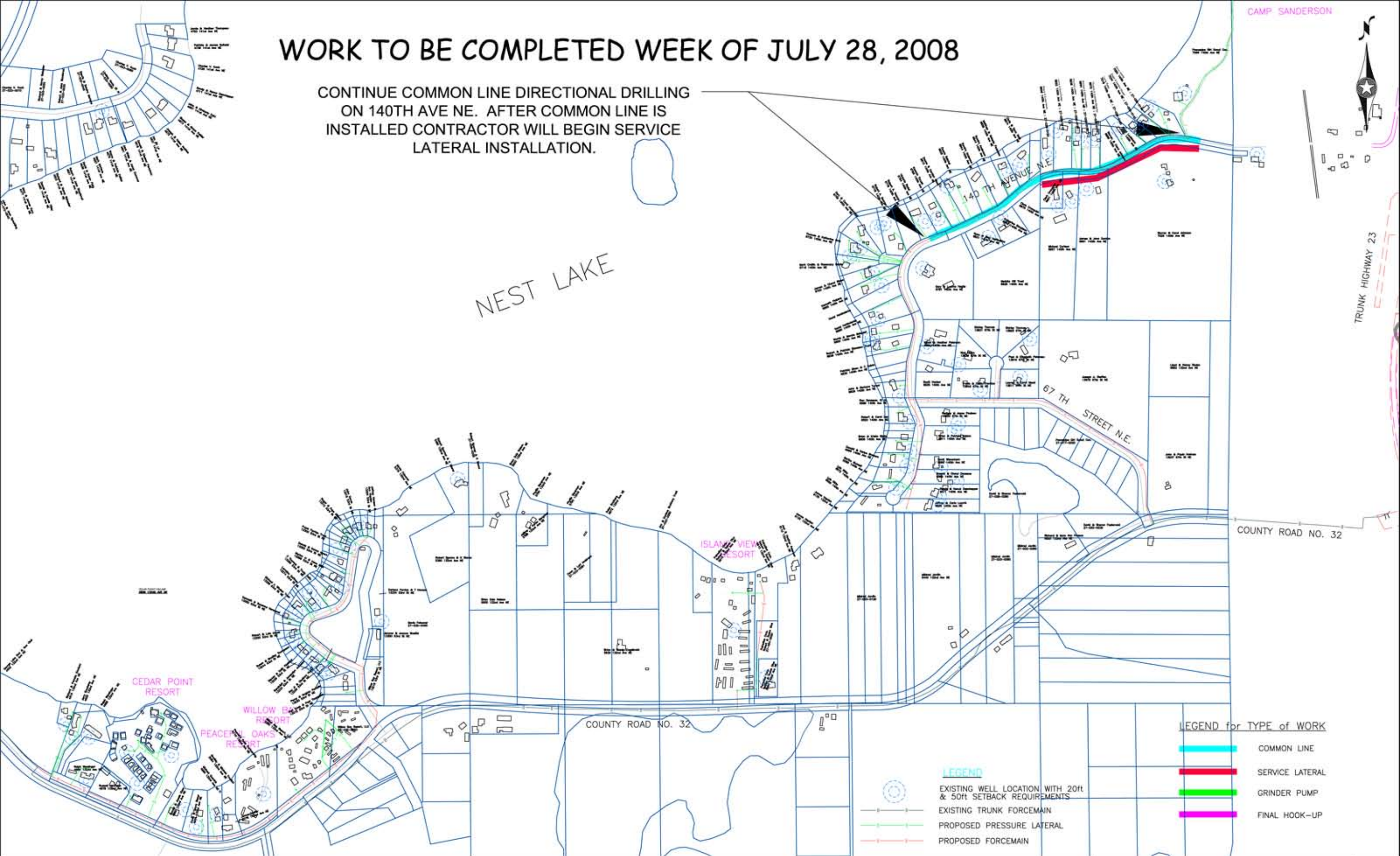


BOLTON & MENK, INC.
Consulting Engineers & Surveyors
MANKATO, MN FAIRMONT, MN SLEEPY EYE, MN WILLMAR, MN
BURNSVILLE, MN CHASKA, MN RAMSEY, MN AMES, IA

KANDIYOHI COUNTY, MINNESOTA
WASTEWATER COLLECTION SYSTEM
FOR HENDERSON, GEORGE & NEST LAKES
NEST LAKE NORTH PROJECT UPDATE MAP

WORK TO BE COMPLETED WEEK OF JULY 28, 2008

CONTINUE COMMON LINE DIRECTIONAL DRILLING ON 140TH AVE NE. AFTER COMMON LINE IS INSTALLED CONTRACTOR WILL BEGIN SERVICE LATERAL INSTALLATION.



NEST LAKE

CAMP SANDERSON

TRUNK HIGHWAY 23

COUNTY ROAD NO. 32

COUNTY ROAD NO. 32

CEDAR POINT RESORT

WILLOW BAY RESORT

PEACEFUL OAKS RESORT

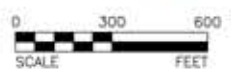
ISLAND VIEW RESORT

LEGEND

- EXISTING WELL LOCATION WITH 20ft & 50ft SETBACK REQUIREMENTS
- EXISTING TRUNK FORCEMAIN
- PROPOSED PRESSURE LATERAL
- PROPOSED FORCEMAIN

LEGEND for TYPE of WORK

- COMMON LINE
- SERVICE LATERAL
- GRINDER PUMP
- FINAL HOOK-UP



BOLTON & MENK, INC.
 Consulting Engineers & Surveyors
 MANKATO, MN FAIRMONT, MN SLEEPY EYE, MN WILLMAR, MN
 BURNSVILLE, MN CHASKA, MN RAMSEY, MN AMES, IA

KANDIYOHI COUNTY, MINNESOTA
 WASTEWATER COLLECTION SYSTEM
 FOR HENDERSON, GEORGE & NEST LAKES
 NEST LAKE SOUTH LAYOUT MAP

SHEET
Fig.2