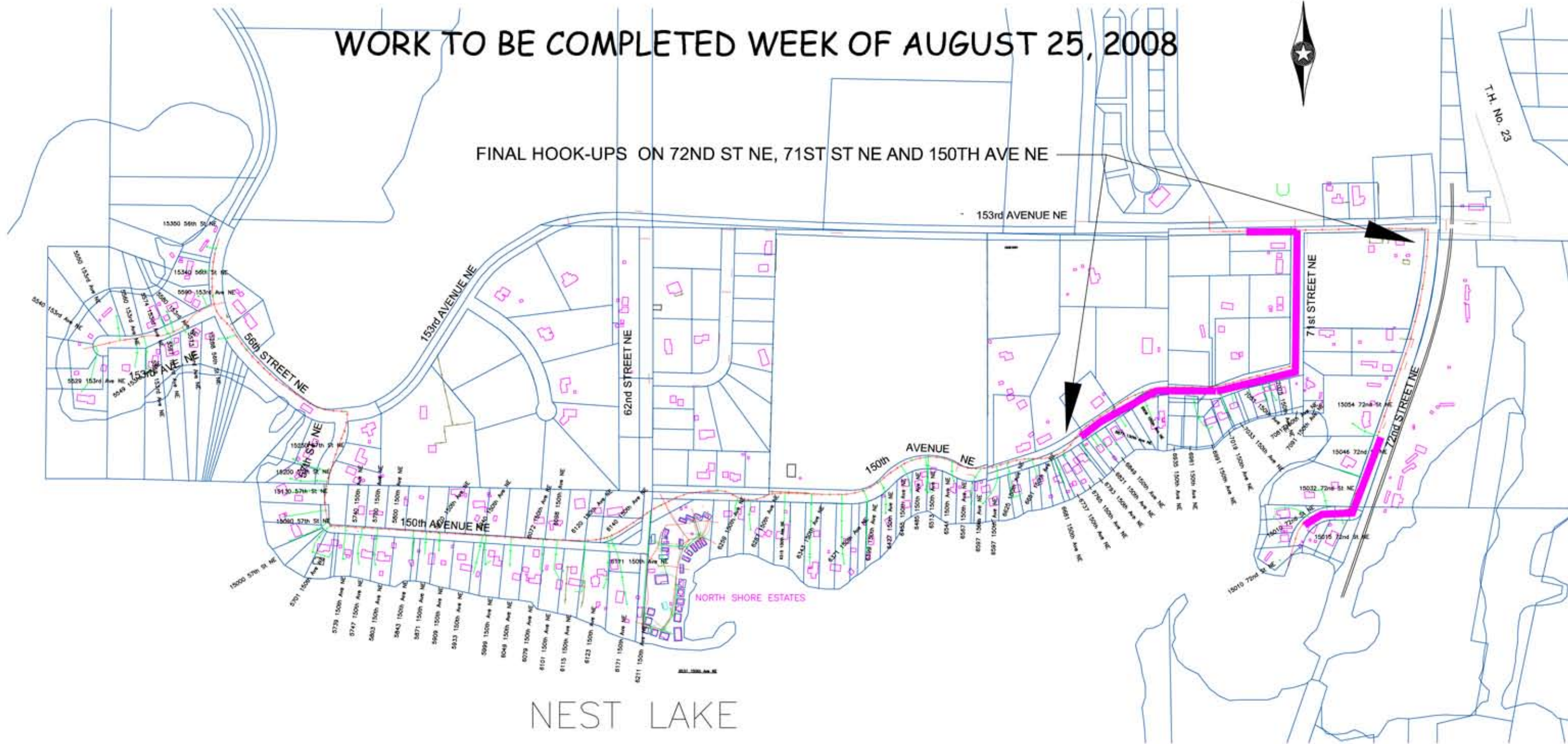
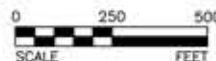
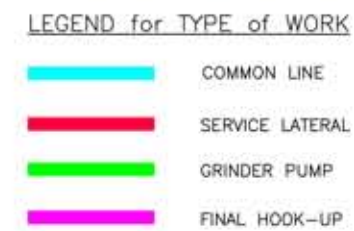
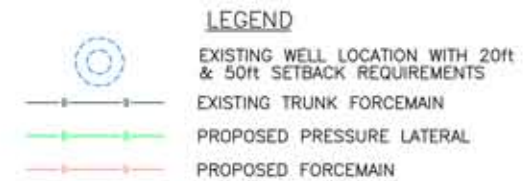


WORK TO BE COMPLETED WEEK OF AUGUST 25, 2008

FINAL HOOK-UPS ON 72ND ST NE, 71ST ST NE AND 150TH AVE NE



**FUTURE WORK SCHEDULE NEST LAKE NORTH SHORE**  
 ELECTRICIAN WILL BE WORKING OUT ON THE LAKE CHANGING OUT  
 METER SOCKETS AND PLOWING IN ELECTRICAL CONDUIT  
 PLEASE REMOVE LANDSCAPING FROM AROUND SEPTIC TANK



**BOLTON & MENK, INC.**  
 Consulting Engineers & Surveyors  
 MANKATO, MN FAIRMONT, MN SLEEPY EYE, MN WILLMAR, MN  
 BURNSVILLE, MN CHASKA, MN RAMSEY, MN AMES, IA

KANDIYOHI COUNTY, MINNESOTA  
 WASTEWATER COLLECTION SYSTEM  
 FOR HENDERSON, GEORGE & NEST LAKES  
 NEST LAKE NORTH PROJECT UPDATE MAP

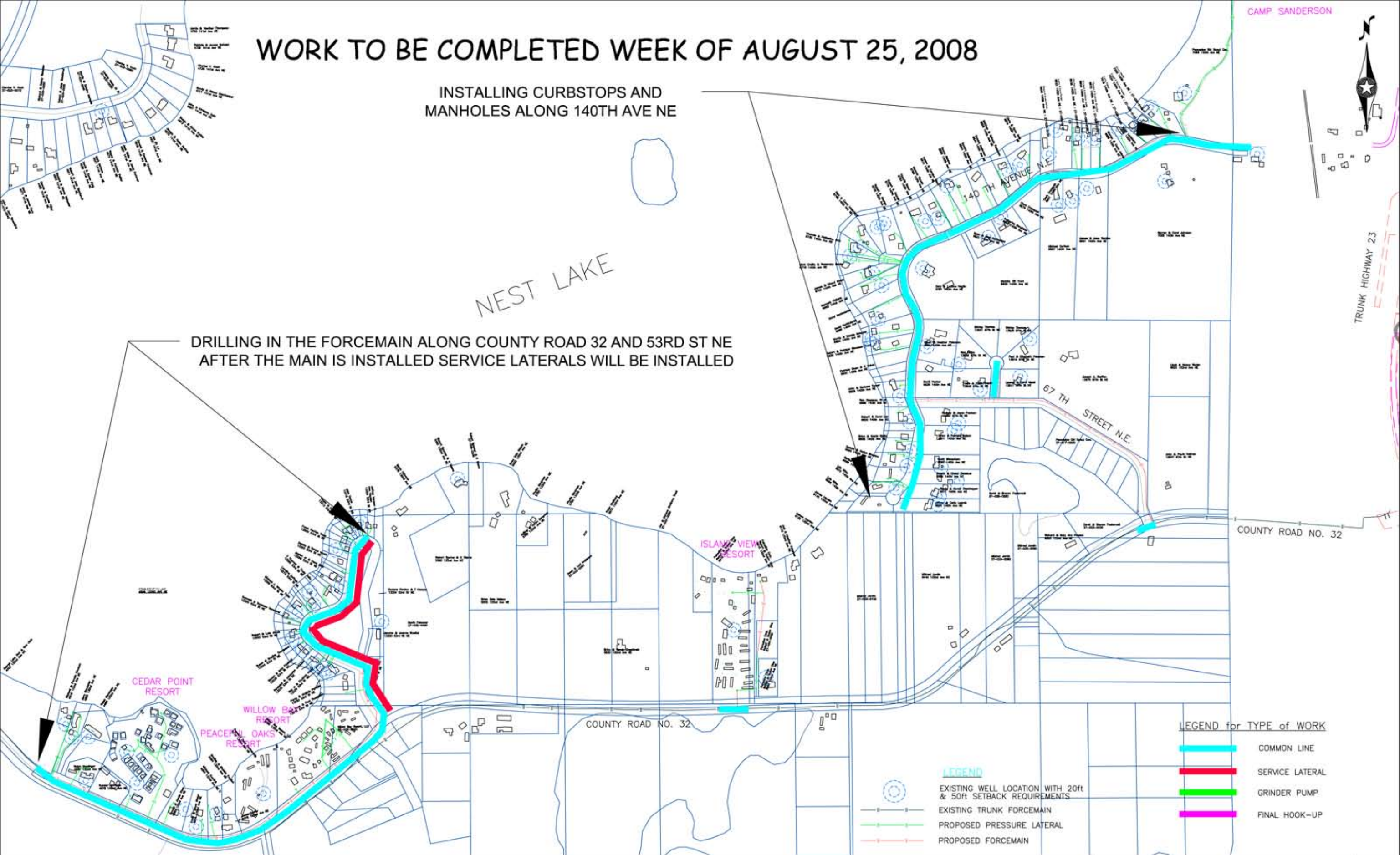
SHEET  
 Fig.1

# WORK TO BE COMPLETED WEEK OF AUGUST 25, 2008

INSTALLING CURBSTOPS AND  
MANHOLES ALONG 140TH AVE NE

NEST LAKE

DRILLING IN THE FORCEMAIN ALONG COUNTY ROAD 32 AND 53RD ST NE  
AFTER THE MAIN IS INSTALLED SERVICE LATERALS WILL BE INSTALLED



**LEGEND for TYPE of WORK**

- COMMON LINE
- SERVICE LATERAL
- GRINDER PUMP
- FINAL HOOK-UP

**LEGEND**

- EXISTING WELL LOCATION WITH 20ft & 50ft SETBACK REQUIREMENTS
- EXISTING TRUNK FORCEMAIN
- PROPOSED PRESSURE LATERAL
- PROPOSED FORCEMAIN



**BOLTON & MENK, INC.**  
Consulting Engineers & Surveyors  
MANKATO, MN FAIRMONT, MN SLEEPY EYE, MN WILLMAR, MN  
BURNSVILLE, MN CHASKA, MN RAMSEY, MN AMES, IA

KANDIYOHI COUNTY, MINNESOTA  
WASTEWATER COLLECTION SYSTEM  
FOR HENDERSON, GEORGE & NEST LAKES  
NEST LAKE SOUTH LAYOUT MAP

H:\KACO\W1339533\CAD\Layouts\NestLakeSouth\AYOUT.dwg

©Bolton & Menk, Inc. 2008. All Rights Reserved

# WORK TO BE COMPLETED WEEK OF AUGUST 25, 2008



US T.H. HWY 71

DRILLING IN THE COMMON LINE  
FORCEMAIN

COUNTY ROAD 10

COUNTY ROAD 9





HENDERSON LAKE

107TH AVE NE

COUNTY ROAD 9

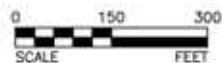
COUNTY ROAD 10

### LEGEND

-  EXISTING WELL LOCATION WITH 20ft & 50ft SETBACK REQUIREMENTS
-  EXISTING TRUNK FORCEMAIN
-  PROPOSED PRESSURE LATERAL
-  PROPOSED FORCEMAIN

### LEGEND for TYPE of WORK

-  COMMON LINE
-  SERVICE LATERAL
-  GRINDER PUMP
-  FINAL HOOK-UP



**BOLTON & MENK, INC.**  
Consulting Engineers & Surveyors

MANKATO, MN FAIRMONT, MN SLEEPY EYE, MN WILLMAR, MN  
BURNSVILLE, MN CHASKA, MN RAMSEY, MN AMES, IA

KANDIYOHI COUNTY, MINNESOTA  
WASTEWATER COLLECTION SYSTEM  
FOR HENDERSON, GEORGE & NEST LAKES  
HENDERSON LAKE LAYOUT

SHEET

Fig.1