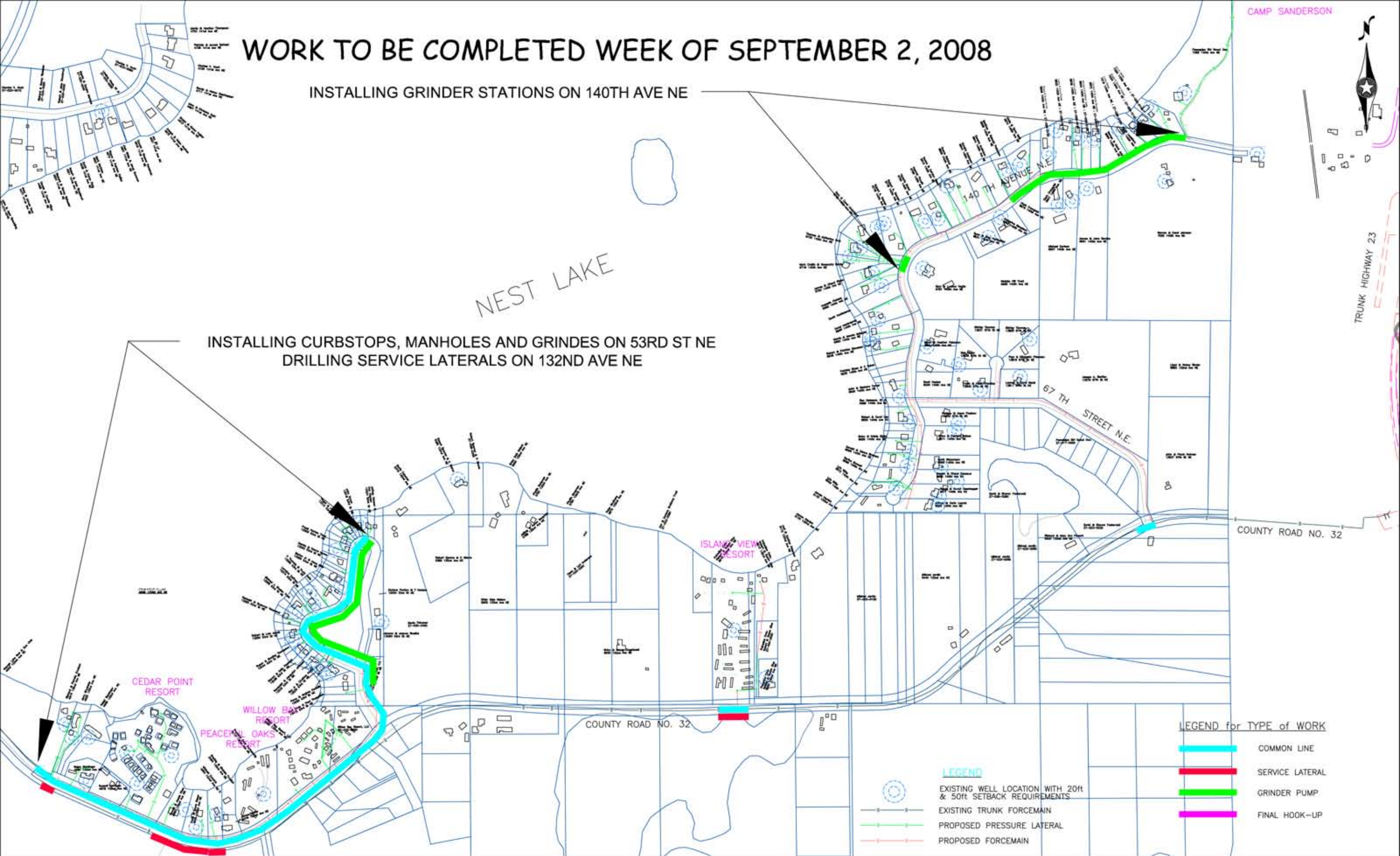


WORK TO BE COMPLETED WEEK OF SEPTEMBER 2, 2008

INSTALLING GRINDER STATIONS ON 140TH AVE NE

NEST LAKE

INSTALLING CURBSTOPS, MANHOLES AND GRINDERS ON 53RD ST NE
DRILLING SERVICE LATERALS ON 132ND AVE NE



LEGEND

- EXISTING WELL LOCATION WITH 20ft & 50ft SETBACK REQUIREMENTS
- EXISTING TRUNK FORCEMAIN
- PROPOSED PRESSURE LATERAL
- PROPOSED FORCEMAIN

LEGEND for TYPE of WORK

- COMMON LINE
- SERVICE LATERAL
- GRINDER PUMP
- FINAL HOOK-UP

0 300 600
SCALE FEET

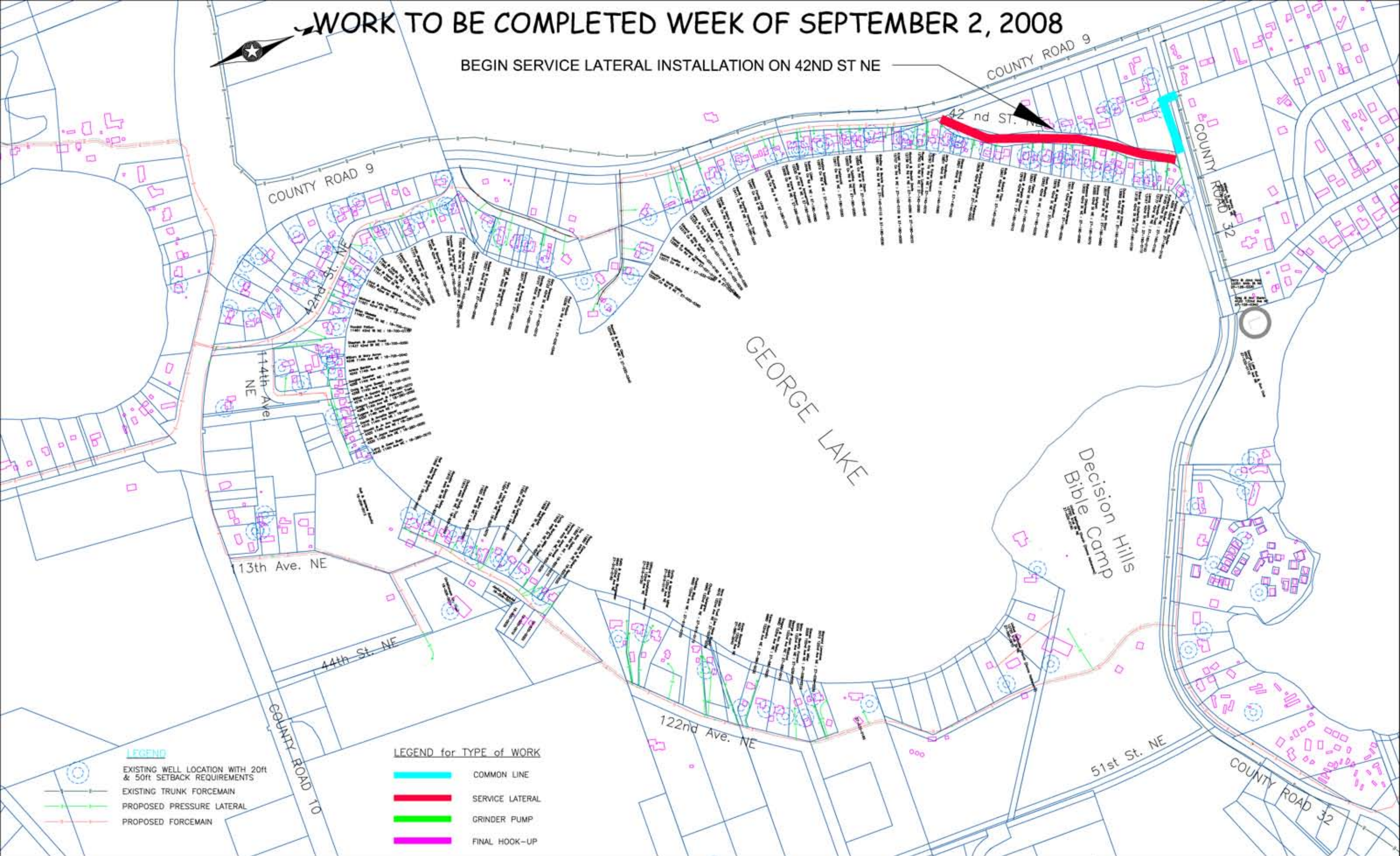
BOLTON & MENK, INC.
Consulting Engineers & Surveyors
MANKATO, MN FAIRMONT, MN SLEEPY EYE, MN WILLMAR, MN
BURNSVILLE, MN CHASKA, MN RAMSEY, MN AMES, IA

KANDIYOHI COUNTY, MINNESOTA
WASTEWATER COLLECTION SYSTEM
FOR HENDERSON, GEORGE & NEST LAKES
NEST LAKE SOUTH LAYOUT MAP

SHEET
Fig.2

WORK TO BE COMPLETED WEEK OF SEPTEMBER 2, 2008

BEGIN SERVICE LATERAL INSTALLATION ON 42ND ST NE

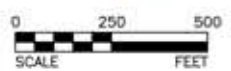


LEGEND

- EXISTING WELL LOCATION WITH 20ft & 50ft SETBACK REQUIREMENTS
- EXISTING TRUNK FORCEMAIN
- PROPOSED PRESSURE LATERAL
- PROPOSED FORCEMAIN

LEGEND for TYPE of WORK

- COMMON LINE
- SERVICE LATERAL
- GRINDER PUMP
- FINAL HOOK-UP



BOLTON & MENK, INC.
Consulting Engineers & Surveyors
MANKATO, MN FAIRMONT, MN SLEEPY EYE, MN WILLMAR, MN
BURNSVILLE, MN CHASKA, MN RAMSEY, MN AMES, IA

KANDIYOHI COUNTY, MINNESOTA
WASTEWATER COLLECTION SYSTEM
FOR HENDERSON, GEORGE & NEST LAKES
GEORGE LAKE LAYOUT

SHEET
Fig.2