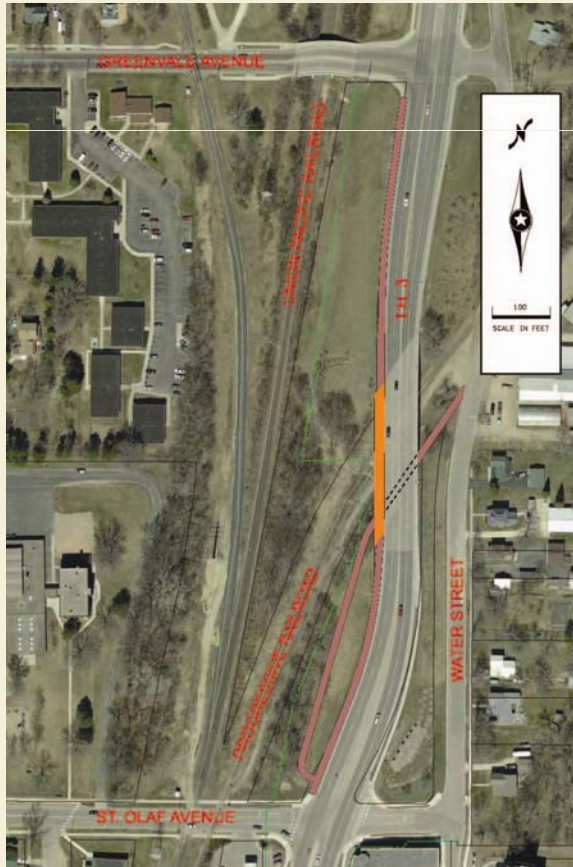


Northern TH 3 Pedestrian Crossing Concepts

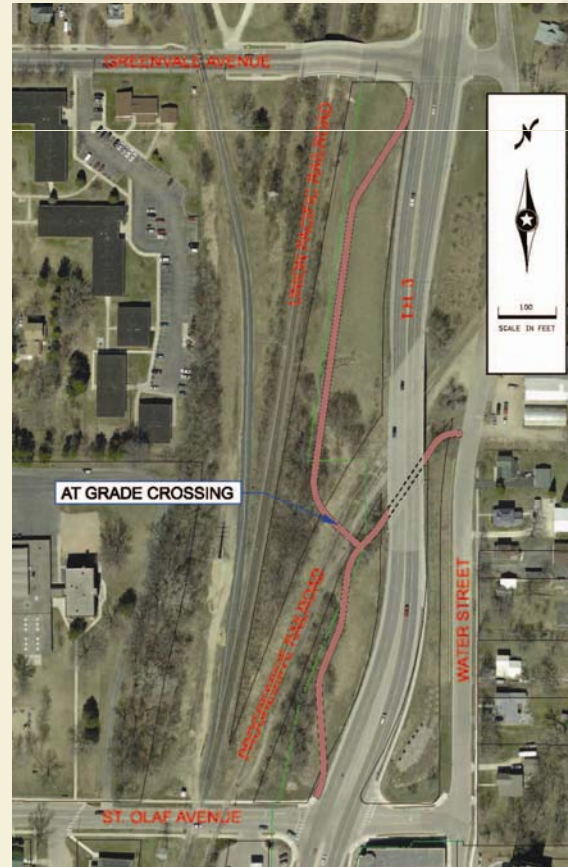
Option A: Bridge Over Railroad Along TH 3

- Existing bridge is 45 year old
- Expansion would be costly
- Separate bridge possible
- Est. cost of \$1.2M to \$1.4M



Option B: At-Grade Crossing of Railroad, Under South Side of TH 3 Railroad Bridge

- New at-grade RR Crossing
- Under TH 3, south of tracks
- Connection to Water Street N.
- Est. cost of \$250K to \$300K
- Not supported by railroad



Option C: Existing Water Street Crossing, Under North Side and South Side of TH 3 Railroad Bridge

- Existing at-grade RR crossing
- Under TH 3, north and south of tracks
- Connection to Water Street N.
- Est. cost of \$600K to \$700K

