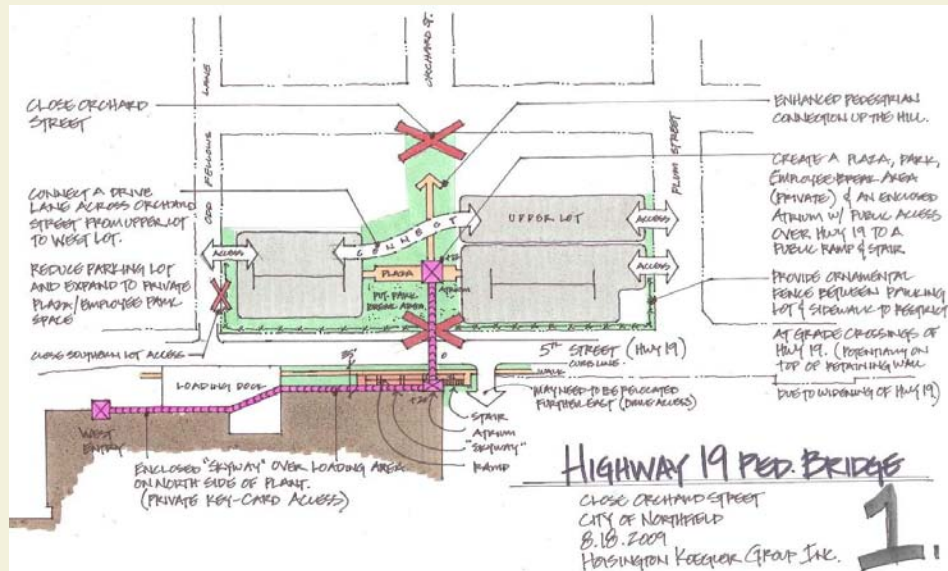
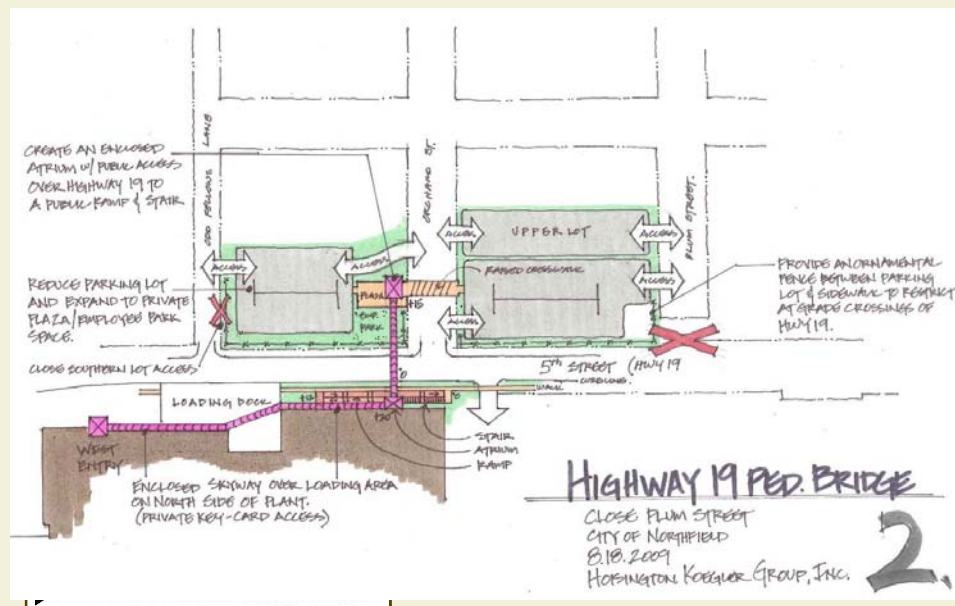


Pedestrian Crossing of TH 19 Concepts



Option A

- Covered bridge crossing of TH 19
- Close Orchard Street
- Create large plaza space
- Ornamental fence between parking area and TH 19
- Stairs and ramps provided on the south side
- Utilizes natural grade on the north side
- Addresses high pedestrian use
- Public / private partnership
- Malt-O-Meal's option to add future private skyway connection
- Estimated cost \$1.6 million



Option B

- Covered bridge crossing of TH 19
- Close Plum Street with TH 19 railroad underpass
- Create plaza space
- Ornamental fence between parking area and TH 19
- Stairs and ramps provided on the south side
- Utilizes natural grade on the north side
- Addresses high pedestrian use
- Public / private partnership
- Malt-O-Meal's option to add future private skyway connection
- Estimated cost \$1.5 million