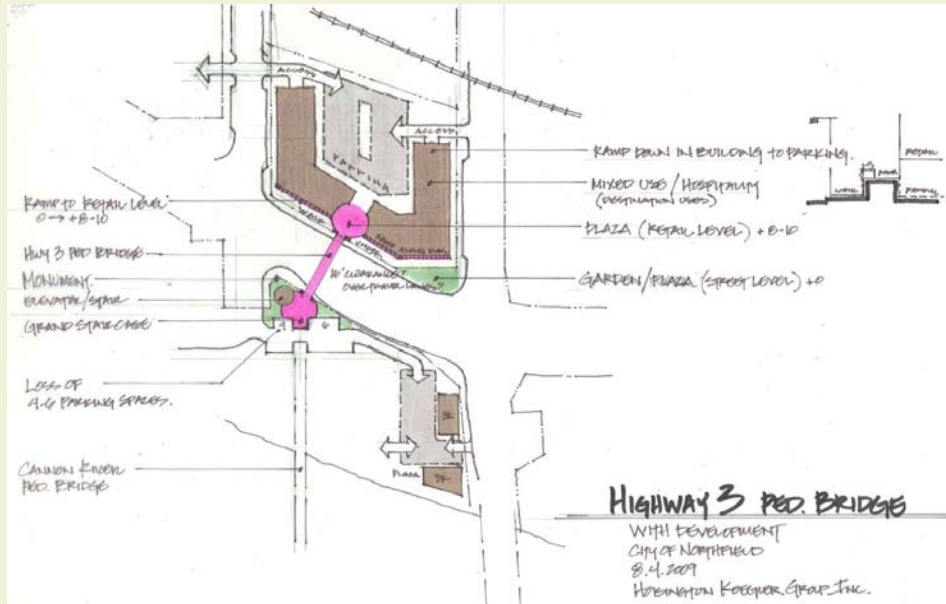


Southern TH 3 Pedestrian Crossing Concepts



Option A

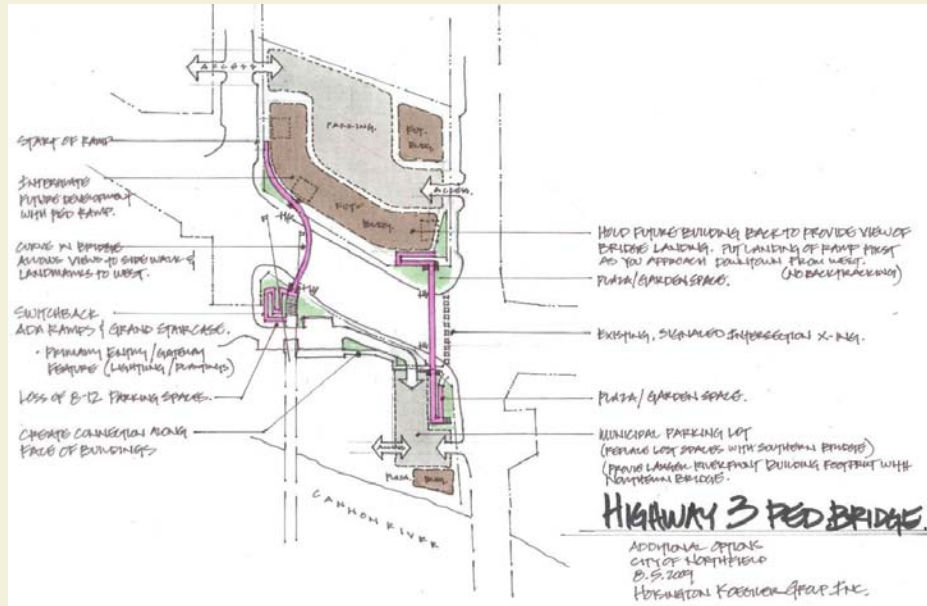
- Elevator on the east side
- Staircase and ramps
- Could fit with future redevelopment on west side
- Ties into second story on west side
- Parking lot (Requires acquisition of property in SE quadrant of TH 3 and 2nd Street)
- Estimated cost \$2.1 million



Option B

- Current businesses remain
- Grand staircase and ramps
- Could fit with future redevelopment on west side
- Parking lot (Requires acquisition of property in SE quadrant of TH 3 and 2nd Street)
- Estimated cost \$1.9 million

Southern TH 3 Pedestrian Crossing Concepts



Option C1 (South Option)

- Curved bridge
- Grand staircase and ramps on the east side
- Could tie into second story development on west side
- Parking lot (Requires acquisition of property in SE quadrant of TH 3 and 2nd Street)
- Estimated cost \$2.3 million

Option C2 (North Option)

- Staircase and ramps on north and south side
- Requires acquisition of property in SW quadrant of TH 3 and 2nd Street
- Ties into parking area
- Parking lot (Requires acquisition of property in SE quadrant of TH 3 and 2nd Street)
- Estimated cost \$2.4 million



Option D

- Enclosed stair and elevator tower on east side
- Requires acquisition of property in SW quadrant of TH 3 and 2nd Street
- Plaza space created on the east side
- Parking lot (Requires acquisition of property in SE quadrant of TH 3 and 2nd Street)
- Estimated cost \$2.5 million