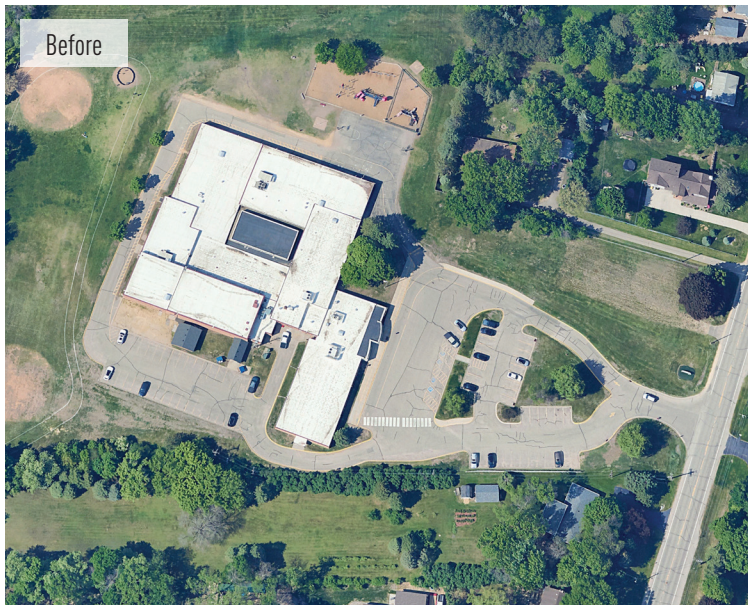


INTUITIVE SCHOOL SITE WAYFINDING AND CIRCULATION

Prioritizing Safety for Schools



Parent drop-off and pick-up at schools has become increasingly common. Many school sites were not designed to accommodate the current pick up and drop off volume of vehicles, which leads to congestion and safety concerns. Our service reimagines site layouts to support intuitive, smoother, and more efficient traffic flow.

Buses and personal vehicles used by staff, students, and parents often share the same space without clear separation. This overlap creates unsafe conditions, particularly for students exiting vehicles. Limited stacking distance for queues frequently causes traffic to spill into nearby roads, resulting in backups and delays.

Parking lots and drop-off zones are often confusing, with no clear path from the entrance to the front door. Drivers tend to create their own routes, adding to the disorganization. Pedestrians walking or biking must navigate these same areas, where crosswalks and pathways are frequently undefined and unsafe.

Why Bolton & Menk

Our approach to intuitive school site wayfinding and circulation puts safety first. We redesign sites to separate bus traffic from personal vehicles, reducing conflict and improving flow. A dedicated drop-off and thru lane streamlines parent pick-up and drop-off, while on-site queuing space helps prevent backups onto nearby roads.

We also guide vehicle movement to the correct building access points, making arrival and departure more predictable and organized. These improvements create a safer, more efficient experience for drivers, pedestrians, and school staff alike.

Benefits

- Safer vehicular and pedestrian movements
- Intuitive and organized pick-up and drop-off functions
- Designed space for successful bus turning radii

