



Real People. Real Solutions.



Inspect. Manage. Report.

Innovative, GIS-based, MS4 system inspection, asset management, and reporting tool.



Other Water Resources Services

- Comprehensive Stormwater Management
- Planning
- GIS Compatible Stormwater Modeling
- TMDL Assistance & Implementation Plans
- Water Quality BMP Designs
- Infiltration, Reclamation, & Reuse Designs
- DFIRM Mapping
- Culvert & Waterway Analysis
- Wetland Services
- Agricultural Drainage

MS4iD™ is an innovative, GIS-based tool that leverages your own stormwater management system information to store and organize critical MS4 inspection data. Through desktop and/or web mapping utilities, all MS4 inspection information can be viewed in real time, queried based on critical inspection parameters, and stored from year to year.

MS4 organizations are required to facilitate and document inspections of numerous storm sewer system components according to their stormwater pollution prevention plans. Performing, managing, and documenting these inspections can be cumbersome and time consuming. These inspections include:

- Structural stormwater best management practices
- Outfalls discharging into local receiving waters
- Stormwater ponds
- Stockpiles and material handling/storage areas
- Illicit discharges
- Construction sites

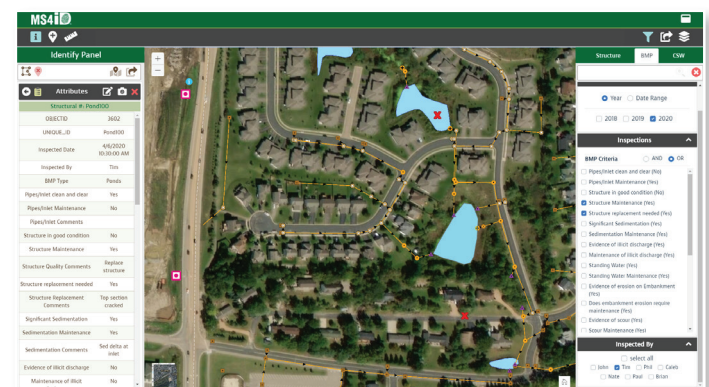
Our Approach

MS4 organizations have an enormous responsibility to operate, inspect and maintain their stormwater management systems. By simplifying the inspection data collection process, you can focus on your commitment to environmental stewardship and achieve the goals of the MS4 permit

that matter most to you. Bolton & Menk considered the tremendous expectations that come with MS4 program management to develop a mobile application that simplifies MS4 asset management.

Benefits

- Efficiently complete field inspections using a mobile, GIS-based application
- Symbolize critical inspection activities in intuitive maps
- Assign maintenance activities to staff and track when complete
- Store inspections and maintenance activities in your GIS, making records easy to track and recall when needed
- Fulfill MS4 permit requirements and expedite annual reporting



CONTACT

Tim Olson, PE, CFM, Principal Water Resources Engineer Timothy.Olson@bolton-menk.com Bolton-Menk.com