

SANITARY SEWER METERING

KNOW YOUR FLOW

Sanitary sewer is a critical piece of infrastructure that can wreak havoc if it fails. Sanitary sewer metering provides information to make immediate decisions and plan for long-term improvements by identifying bottle necks, isolating inflow and infiltration (I&I) sources, and calibrating existing land use based flow models.

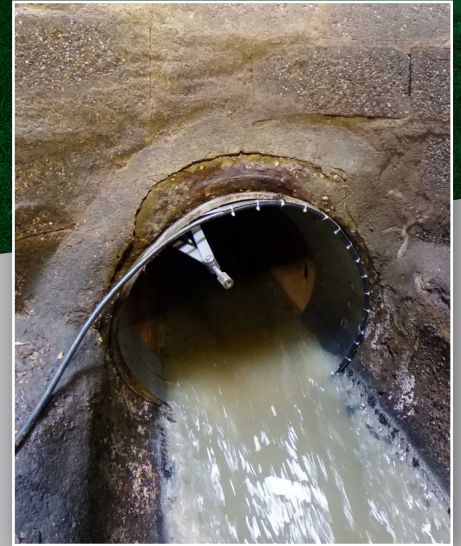
First, we discuss the clients' specific needs and review sanitary sewer network maps and as-builts to identify locations and confirm metering logistics. Then, we install the assigned meters, monitor equipment throughout the study, and analyze the data for a variety of applications.

BENEFITS

- **Rainfall Derived Infiltration and Inflow (RDII):** Pair sewer metering with localized rain gauge to strategically isolate sewer sheds to identify sources of I&I
- **Live Data Analysis:** View data and equipment health in real time while setting alarms for exceedance thresholds or unusual flow patterns
- **Capacity Analysis:** Plan for future development impacts
- **Calibrated Sanitary Models:** Metered data provides decision making tools for high flow users and industrial waste
- **Quantifying Temporary Conveyance Demands:** Size conveyance operations for critical sewer improvements
- **Sanitary Sewer Charges:** Charge for high use service lines with data to back you up

WHY BOLTON & MENK

Water and wastewater treatment has long been a significant focus for Bolton & Menk, helping municipalities and industries clean, conserve, and protect their water supplies. For new and future development areas, it is imperative to accurately forecast wastewater flows. In serving more than 300 communities, we know the flow projection calculations have a downstream effect on an entire sanitary sewer system. Bolton & Menk has expertise metering flows for a variety of client needs.



Picture of Scissor Band In-Place

OTHER CIVIL/MUNICIPAL SERVICES

- Municipal Infrastructure
- Water/Wastewater Treatment
- Water Resources
- Transportation
- Geographic Information System
- Planning
- Trenchless
- Construction
- Immersive Imagery Collections



CONTACT

Mark Onken, PE

Project Engineer

Mark.Onken@bolton-menk.com



**BOLTON
& MENK**

Real People. Real Solutions.

Bolton-Menk.com