

CITY OF HOPKINS
Engineering Department
1010 1st Street South
Hopkins, MN 55343
(952) 935-8474

BOLTON & MENK, INC.
12224 Nicollet Avenue
Burnsville, MN 55337
(952) 890-0509

CITY OF ST. LOUIS PARK
5005 Minnetonka Blvd.
St. Louis Park, MN 55416
(952) 924-2656

CONSTRUCTION NEWSLETTER



Assessments



Project
Schedule



Construction



Access, Parking, &
Communication



Temporary
Water



Safety



Contact



Map &
Phasing



SPECIAL ASSESSMENTS

The final interest rate for the Special Assessments has been determined. Payments can be made without interest until July 31, 2018. Payments can be made with interest between August 1 and November 29, 2018 before going on property taxes. The interest rate is 4.904%. Questions regarding special assessments can be directed to the special assessment clerk, Mary Lein at 952-548-6310.

An approximate long range schedule is currently set for the following:

Late July/Early August

- Street paving on Division St
- Lawn restoration on Division St and the Alley
- Concrete curb and driveways on Oxford St
- Street paving on Oxford St
- Pavement Removals and utility construction on Cambridge St will begin



PROJECT SCHEDULE

A map of the project area is included at the end of this newsletter. Work by SM Hentges on phases 1, 2, 3, and 4 is underway. The alley is near completion aside from turf restoration and cleanup work which will occur in the next 1 to 2 weeks. The remainder of the concrete work on Division Street will be wrapped up in the next week and the first layer of asphalt paving is scheduled to occur by the end of the month. Oxford Street utility work has been completed and concrete curb will be installed by the end of the month with asphalt paving to follow shortly after. Texas Avenue utility work is scheduled to wrap up by the first week in August with street grading to immediately follow. SM Hentges will start work on phase 5, Cambridge Street, during the week of August 6 with existing pavement removals.

Late August / Early September

- Pavement Removals and utility construction on Lake St and Murphy Ave will begin
- Concrete curb and driveways on Texas Ave
- Street Paving on Texas Ave
- Lawn restoration on Oxford St and Texas Ave
- Concrete curb and driveways on Cambridge St

Late September/Early October

- Utility construction on Lake St and Murphy Ave will be completed; Street grading will begin
- Street paving on Cambridge St
- Lawn restoration on Cambridge St



CONSTRUCTION

Concrete Pouring

Concrete pouring will begin shortly after underground utility construction has been completed. Please stay off all of the wet concrete with pedestrian traffic for 24 hours and vehicle traffic for 7 days. Driving on the new concrete too early can cause it to crack, causing the full process to be restarted and delaying completion. Notice will be provided to residents before the concrete pours giving an opportunity for residents to remove vehicles from driveways to safe areas to park.

Road Paving

After the concrete curb has been poured, the roadway will be paved with its first lift of asphalt. PLEASE BE CAREFUL AROUND THE FRESHLY PAVED ASPHALT. The asphalt will typically be installed at temperatures between 275° F and 350° F. Therefore, please have children and pets stay away from the asphalt until it cools, which will be after it's rolled the same day. Touching the asphalt too fast can burn the skin or paws. A notice will be handed out on streets a few days before paving, directing residents where to park the day of paving. The final lift will be paved on all phases of the project in late October/ early November.



TEMPORARY WATER SERVICE

A temporary watermain has been installed by SM Hentges and is active on Texas Avenue. A similar system will be set up on Cambridge Street shortly. This process will happen for every street and serving each Hopkins resident. St. Louis Park residents will not be placed on a temporary water system, as their watermain is not being replaced. Residents affected by installation of a temporary water system or affected by a temporary water shutdown will receive a separate notice with specific details and dates as it applies to their property.

Where watermain is being replaced in Hopkins, the temporary watermain will be in use until the new watermain is completely installed, which is commonly about 3 to 4 weeks. The Contractor will typically connect to your outside water spigot with a special fitting that will still allow use of your hose while being

served by the temporary water system. Please contact Josh Hrabe if you don't have an outside water spigot.




ACCESS, PARKING, & COMMUNICATION

The construction process results in a great product at its completion, but can test one's patience along its course. Typical working hours for the project will be 7 a.m. to 7 p.m., Monday through Friday, and 8 a.m. to 6 p.m. on Saturdays if necessary. No work is allowed on Sundays or holidays.

While the negatives of construction are in many ways unavoidable, the City aims to reduce the burden through working with the contractor to minimize disruption, providing routine mailings and other communication for residents, and providing an on-site liaison for residents. In general, newsletters will be provided on a monthly basis, project website updates will be completed weekly, and property notices will be delivered to front doors as often as daily. Residents can contact **Josh Hrabe** at **(612) 965-2473**, who is the on-site contact there to represent the City and its residents through the construction process.

Weekly Construction Updates

To subscribe to more frequent updates (typically weekly), navigate to the project website at

 Sign-up for electronic project updates

www.hopkins2018.net and click on the "Sign-up for electronic project Updates" button.

Subscribing to these updates will provide you with the most up to date project information and schedule. If you have already subscribed to these updates, please spread the word to your neighbors.

Parking

When the street and utilities are under construction, the contractor will need all of the space in the street possible. Therefore parking will not be allowed on the project area streets during the working hours. Access to driveways will be provided as much as possible. Temporary access restrictions should be anticipated during the work day. The project team understands the need for access to each property, therefore the streets will be temporarily restored at the end of each work day and access to private driveways will generally be available each night.

Access Following Storms

2018 has had a very wet early summer. During the street & utility reconstruction, access conditions are most challenging after rainfall. Vehicle use over muddy streets makes conditions worse for each passing vehicle. Residents will be encouraged to drive on paved roadways whenever that alternative exists and minimize use of roadways when they are muddy.

Trash & Recycling Pickup

Please have your garbage and recycling cans out and accessible for pickup by 6 a.m. on pickup day so the truck can come through the neighborhood before construction starts at 7 a.m. If necessary, the contractor will pull cans out to an accessible area for the trucks to pick up if they can't get down your street. The contractor will then return your garbage and recycling cans to your driveway. You just have to put your cans in the same spot as you normally would on pick up day.



SAFETY

The contractor will do everything they can to make the project area safe for residents. However, residents should be aware of their surroundings when walking or driving near construction equipment. The City asks that residents keep their distance from construction equipment in use and utility trenches. There are also materials that can cause harm if caution is not used such as hot asphalt pavement. Please keep children and pets away from construction activity and open trenches as they might not be aware of the dangers.

If you see anything that you feel is unsafe, please do not hesitate to call Josh Hrabe.



CONTACT AND WEBSITE INFO



Josh Hrabe, of Bolton & Menk, Inc., will be on the project site representing the City and its residents and business owners. If you have any questions regarding this newsletter, the project, or anything in general, you may approach him on site or call his cell phone at **(612) 965-2473**. He can also be reached via email at ioshhr@bolton-menk.com

Nick Amatuccio, of Bolton & Menk, Inc., is the Project Engineer overseeing the construction process and will serve as a secondary point of contact. He can be reached at **(612)-965-3926** or nickam@bolton-menk.com

Mike Waltman, of Bolton & Menk, Inc., is the Project Manager working on behalf of the City and its residents. He can be reached at **(952) 890-0509** or **(612) 221-6946** or mikewa@bolton-menk.com

Eric Klingbeil is the Assistant City Engineer for the City of Hopkins. He can be reached at **(952) 548-6357** or eklingbeil@hopkinsmn.com

Joe Shamla is the Senior Engineering Project Manager for the City of St. Louis Park. He can be reached at **(952) 924-2552** or jshamla@stlouispark.org

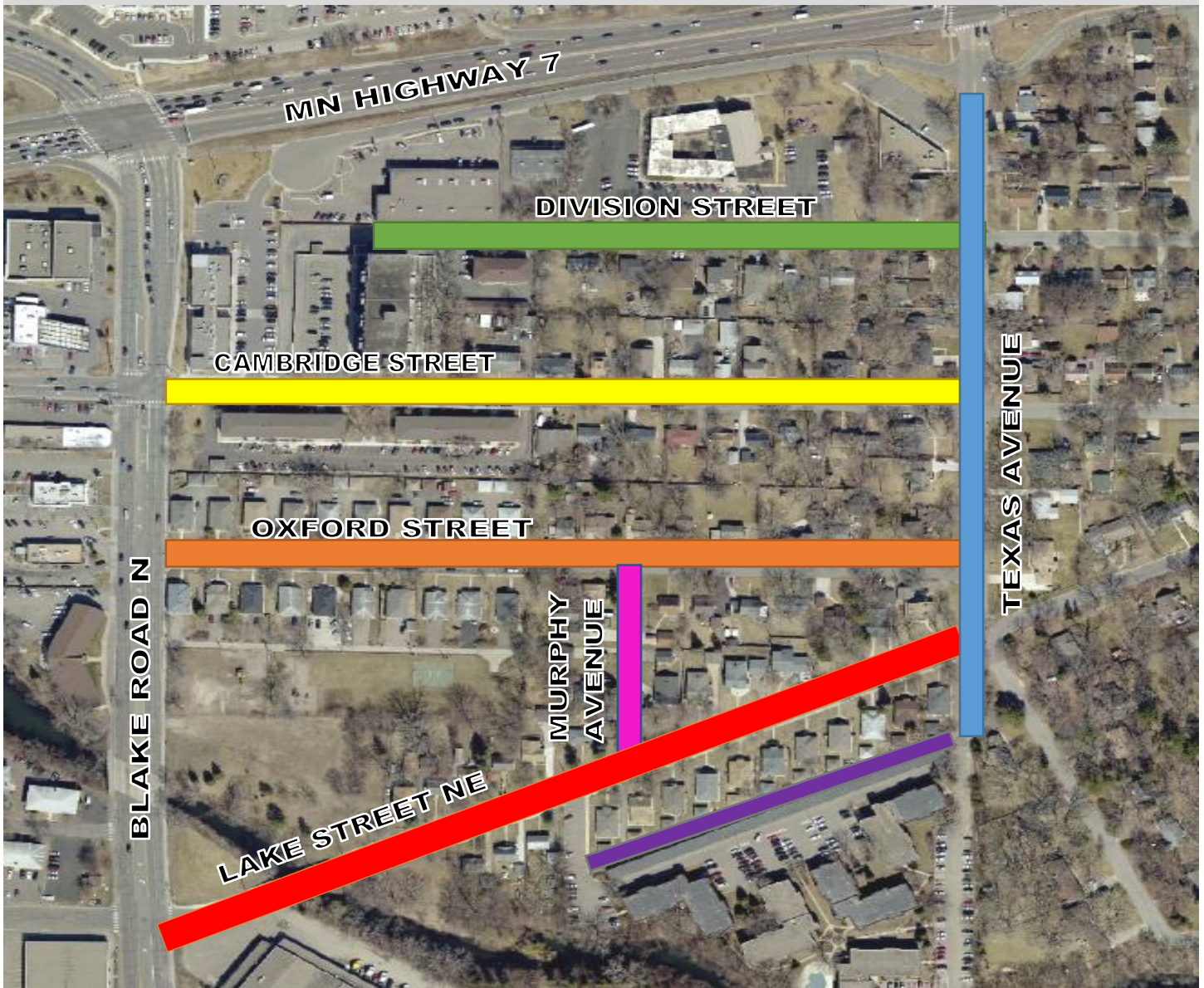
Website: The website will be updated approximately weekly with the latest project info throughout construction, and residents can sign-up for weekly email updates through the website. The site URL is www.hopkins2018.net

If you would like this newsletter in alternative formats or languages please contact Eric Klingbeil at eklingbeil@hopkinsmn.com or **952-935-1834**.








Si desea obtener este boletín en alternativa formato o idiomas porfavor contacta a Eric Klingbeil al eklingbeil@hopkinsmn.com o **952-935-1834**.

PROJECT LOCATION & PHASING MAP

CITY OF HOPKINS/ST. LOUIS PARK 2018 STREET & UTILITY IMPROVEMENTS



LEGEND

 PHASE 1, (EARLY JUNE – EARLY AUGUST)	 PHASE 5, (EARLY AUGUST – EARLY OCTOBER)
 PHASE 2, (LATE JUNE – LATE JULY)	 PHASE 6, (LATE AUGUST – LATE OCTOBER)
 PHASE 3, (MID JUNE – MID AUGUST)	 PHASE 7, (LATE AUGUST – LATE OCTOBER)
 PHASE 4, (LATE JUNE – LATE AUGUST)	

- Schedule changes in early stages due to weather, contractor scheduling, and unforeseen conditions may impact later stages
- As construction occurs, schedule updates to be provided via newsletters, website, flyers, etc.
- Final paving to occur in Late October/Early November for all phases