

CITY OF HOPKINS
Engineering Department
1010 1st Street South
Hopkins, MN 55343
(952) 935-8474

BOLTON & MENK, INC.
12224 Nicollet Avenue
Burnsville, MN 55337
(952) 890-0509

CITY OF ST. LOUIS PARK
5005 Minnetonka Blvd.
St. Louis Park, MN 55416
(952) 924-2656

CONSTRUCTION NEWSLETTER



Project
Schedule



Construction



Access, Parking, &
Communication



Temporary
Water



Safety



Contact



Map &
Phasing



PROJECT SCHEDULE

A map of the project area is included at the end of this newsletter. Work by SM Hentges on phases 3 through 7 is underway. Phases 1 & 2 are substantially complete aside from some minor cleanup items. Sod has been placed on most of Oxford Street and will be finished as soon as we get some drier weather. Texas Avenue has been paved with the first layer of asphalt and concrete sidewalk/turf restoration will be completed during the first two weeks of October. Concrete curb and gutter will be poured on Cambridge Street the first week in October, with the first layer of asphalt paving scheduled for the following week. SM Hentges started work on Murphy Avenue and Lake Street NE during the first week of September and has continued working on the new utilities including sanitary sewer, watermain, Met Council forcemain, and storm sewer. Utility work will continue into Mid-October for the last two phases of the project.

An approximate long range schedule is currently set for the following:

Early – Mid-October

- Street Signs and Trees on Phases 1, 3, and 4
- Lawn restoration finished on Oxford St
- Concrete curb and driveways on Cambridge St

- Finish sidewalks on Texas Ave
- Street paving on Cambridge St
- Lawn restoration on Texas Ave
- Finish utility construction on Murphy Ave and Lake St NE

Late October / Early November

- Concrete curb and driveways on Murphy Ave and Lake St NE
- Street Paving on Murphy Ave and Lake St NE
- Lawn restoration Cambridge St, Murphy Ave and Lake St NE
- Street Signs and Trees on Phases 5, 6, and 7
- Final paving on Phases 1, 3, 4, and 5

Mid-November

- Final paving on Phases 6 and 7
- Final clean-up work on all streets



CONSTRUCTION

Concrete Pouring

Concrete pouring will begin shortly after underground utility construction has been completed. Please stay off all of the wet concrete with pedestrian traffic for 24 hours and vehicle traffic for 7 days. Driving on the new concrete too early can cause it to crack, causing the full

process to be restarted and delaying completion. Notice will be provided to residents before the concrete pours giving an opportunity for residents to remove vehicles from driveways to safe areas to park.

Road Paving

After the concrete curb has been poured, the roadway will be paved with its first lift of asphalt. PLEASE BE CAREFUL AROUND THE FRESHLY PAVED ASPHALT. The asphalt will typically be installed at temperatures between 275° F and 350° F. Therefore, please have children and pets stay away from the asphalt until it cools, which will be after it's rolled the same day. Touching the asphalt too fast can burn the skin or paws. A notice will be handed out on streets a few days before paving, directing residents where to park the day of paving.



TEMPORARY WATER SERVICE

A temporary watermain has been installed by SM Hentges and is active on Lake St and Murphy Ave. Residents affected by a temporary water shutdown will receive a separate notice with specific details and dates as it applies to their property.

Where watermain is being replaced in Hopkins, the temporary watermain will be in use until the new watermain is completely installed, which is commonly about 3 to 4 weeks. The Contractor will typically connect to your outside water spigot with a special fitting that will still allow use of your hose while being served by the temporary water system.



ACCESS, PARKING, & COMMUNICATION

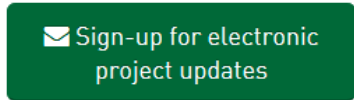
The construction process results in a great product at its completion, but can test one's patience along its course. Typical working hours for the project will be 7 a.m. to 7 p.m., Monday through Friday, and 8 a.m. to 6 p.m. on Saturdays if necessary. No work is allowed on Sundays or holidays.

While the negatives of construction are in many ways unavoidable, the City aims to reduce the burden through working with the contractor to minimize disruption,

providing routine mailings and other communication for residents, and providing an on-site liaison for residents. In general, newsletters will be provided on a monthly basis, project website updates will be completed weekly, and property notices will be delivered to front doors as often as daily. Residents can contact **Josh Hrabe** at **(612) 965-2473**, who is the on-site contact there to represent the City and its residents through the construction process.

Weekly Construction Updates

To subscribe to more frequent updates (typically weekly), navigate to the project website at



www.hopkins2018.net and click on the "Sign-up for electronic project Updates" button.

Subscribing to these updates will provide you with the most up to date project information and schedule. If you have already subscribed to these updates, please spread the word to your neighbors.

Creekwood Estates Access

Signs have been placed at both entrances to the Creekwood Estates Apartments to indicate which entrance can be accessed during the day. The signs will also indicate which route should be used when leaving the neighborhood. The same route that was taken when leaving should be taken when returning to the neighborhood during that same day. Access may change as often as daily but the signs will be updated as needed to keep at least one entrance to the apartments accessible at all times.

Parking

When the street and utilities are under construction, the contractor will need all of the space in the street possible. Therefore parking will not be allowed on the project area streets during the working hours. Access to driveways will be provided as much as possible. Temporary access restrictions should be anticipated during the work day. The project team understands the need for access to each property, therefore the streets will be temporarily restored at the end of each work day and access to private driveways will generally be available each night.

Access Following Storms

There has been some very wet weather recently. During the street & utility reconstruction, access conditions are

most challenging after rainfall. Vehicle use over muddy streets makes conditions worse for each passing vehicle. Residents will be encouraged to drive on paved roadways whenever that alternative exists and minimize use of roadways when they are muddy.

Trash & Recycling Pickup

Please have your garbage and recycling cans out and accessible for pickup by 6 a.m. on pickup day so the truck can come through the neighborhood before construction starts at 7 a.m. If necessary, the contractor will pull cans out to an accessible area for the trucks to pick up if they can't get down your street. The contractor will then return your garbage and recycling cans to your driveway. You just have to put your cans in the same spot as you normally would on pick up day.



SAFETY

The contractor will do everything they can to make the project area safe for residents. However, residents should be aware of their surroundings when walking or driving near construction equipment. The City asks that residents keep their distance from construction equipment in use and utility trenches. There are also materials that can cause harm if caution is not used such as hot asphalt pavement. Please keep children and pets away from construction activity and open trenches as they might not be aware of the dangers.

If you see anything that you feel is unsafe, please do not hesitate to call Josh Hrabe.



CONTACT AND WEBSITE INFO



Josh Hrabe, of Bolton & Menk, Inc., will be on the project site representing the City and its residents and business owners. If you have any questions regarding this newsletter, the project, or anything in general, you may approach him on site or call his cell phone at **(612) 965-2473**. He can also be reached via email at joshhr@bolton-menk.com

Nick Amatuccio, of Bolton & Menk, Inc., is the Project Engineer overseeing the construction process and will serve as a secondary point of contact. He can be reached at **(612)-965-3926** or nickam@bolton-menk.com

Mike Waltman, of Bolton & Menk, Inc., is the Project Manager working on behalf of the City and its residents. He can be reached at **(952) 890-0509** or **(612) 221-6946** or mikewa@bolton-menk.com

Eric Klingbeil is the Assistant City Engineer for the City of Hopkins. He can be reached at **(952) 548-6357** or eklingbeil@hopkinsmn.com

Joe Shamla is the Senior Engineering Project Manager for the City of St. Louis Park. He can be reached at **(952) 924-2552** or jshamla@stlouispark.org

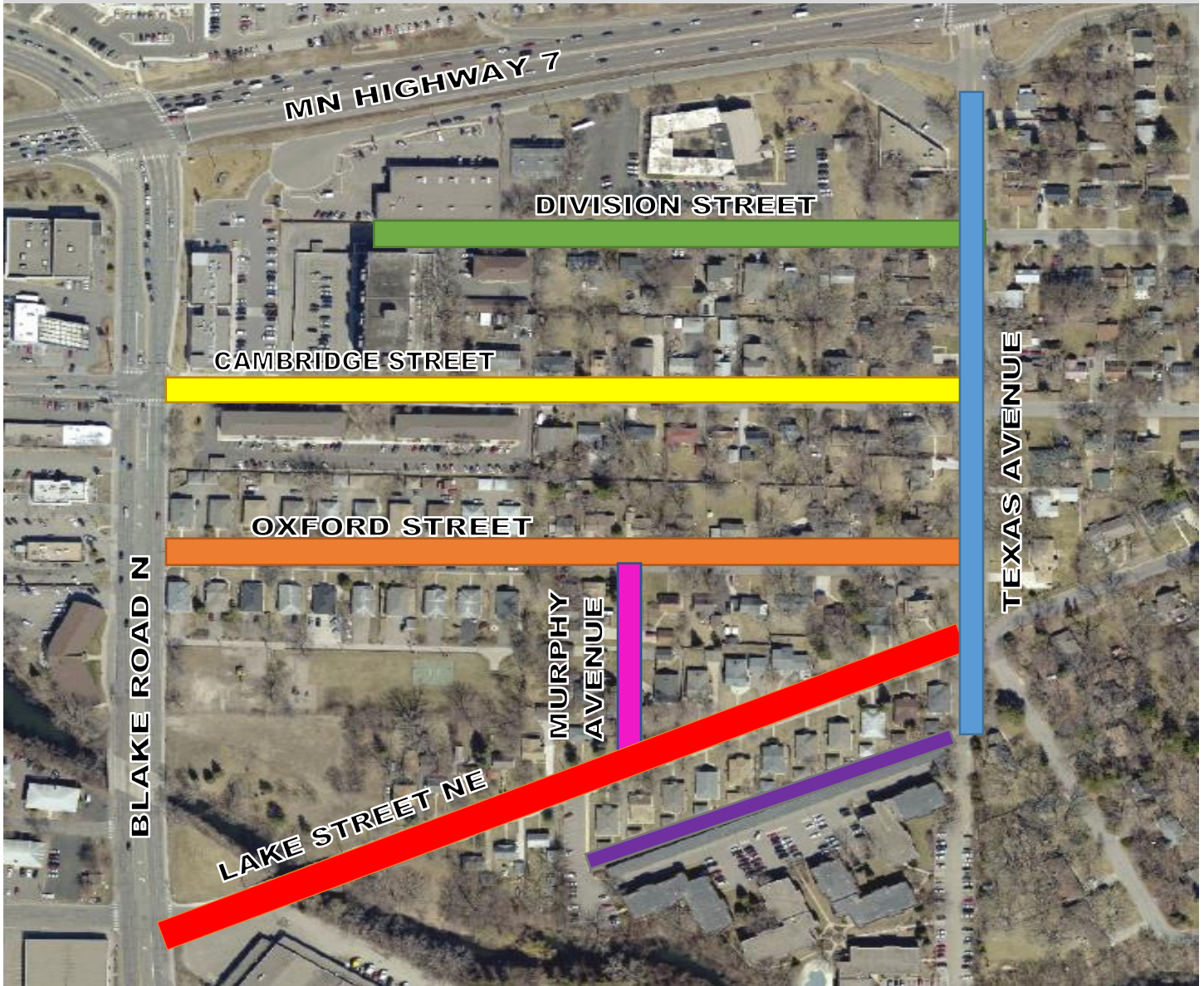
Website: The website will be updated approximately weekly with the latest project info throughout construction, and residents can sign-up for weekly email updates through the website. The site URL is www.hopkins2018.net

If you would like this newsletter in alternative formats or languages please contact Eric Klingbeil at eklingbeil@hopkinsmn.com or **952-935-1834**.








Si desea obtener este boletín en alternativa formato o idiomas por favor contacta a Eric Klingbeil al eklingbeil@hopkinsmn.com o **952-935-1834**.

PROJECT LOCATION & PHASING MAP

CITY OF HOPKINS/ST. LOUIS PARK 2018 STREET & UTILITY IMPROVEMENTS



LEGEND

 PHASE 1, (SUBSTANTIALLY COMPLETE)	 PHASE 5, (EARLY AUGUST – LATE OCTOBER)
 PHASE 2, (SUBSTANTIALLY COMPLETE)	 PHASE 6, (EARLY SEPTEMBER – LATE OCTOBER)
 PHASE 3, (MID JUNE – EARLY OCTOBER)	 PHASE 7, (LATE AUGUST – EARLY NOVEMBER)
 PHASE 4, (LATE JUNE – MID OCTOBER)	

- Schedule changes in early stages due to weather, contractor scheduling, and unforeseen conditions may impact later stages
- Final paving to occur between Mid-October and Mid-November for all phases