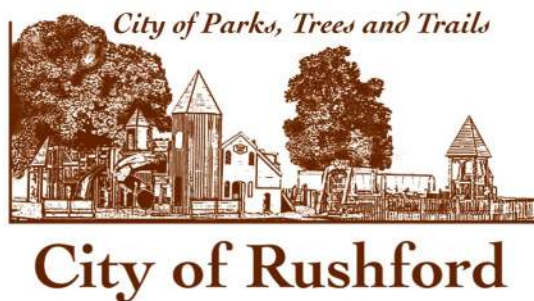


# Trunk Highway 30 Reconstruction Downtown Focus Group Discussion #2

February 26, 2020



# Introductions

**Derek Olinger, P.E.** (Primary Contact)

Bolton & Menk, Inc. / Rushford City Engineer

Cell: 507-525-2685

derek.olinger@bolton-menk.com

**Richard Augustin, P.E.**

MnDOT / Project Manager

Phone: 507-286-7546

richard.augustin@state.mn.us



# Outline & Purpose

- **Brief Overview of Project Scope**
- **Comments/Concerns (from previous meetings)**
- **New Information**
  - Allowable Street Widths
  - Assessment Information
- **Collect Comments for Preferred Downtown Design**
  - Comments will be relayed to City Council & MnDOT for “Final” Decision



# Project Area



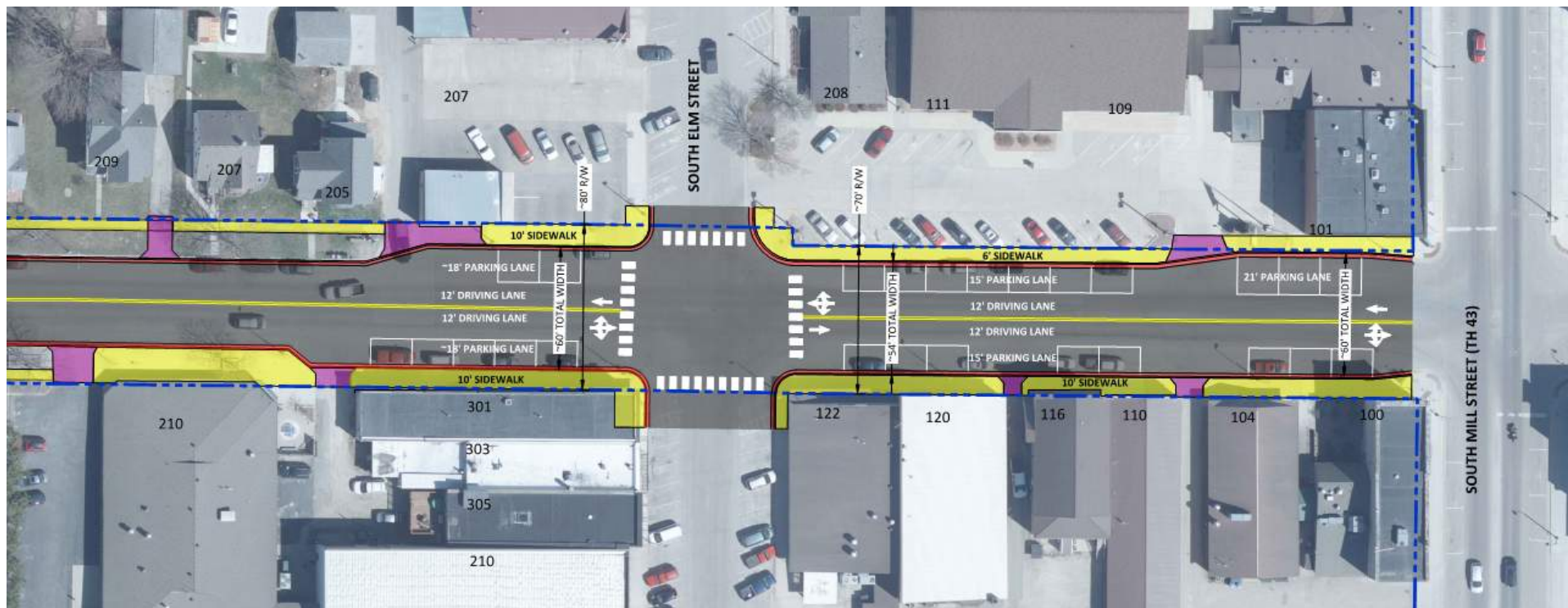


# Street & Utility Improvements

\*PROJECT INCLUDES REPLACEMENT OF  
STREET, SIDEWALK, STORM SEWER, SANITARY  
SEWER, WATERMAIN AND SERVICES

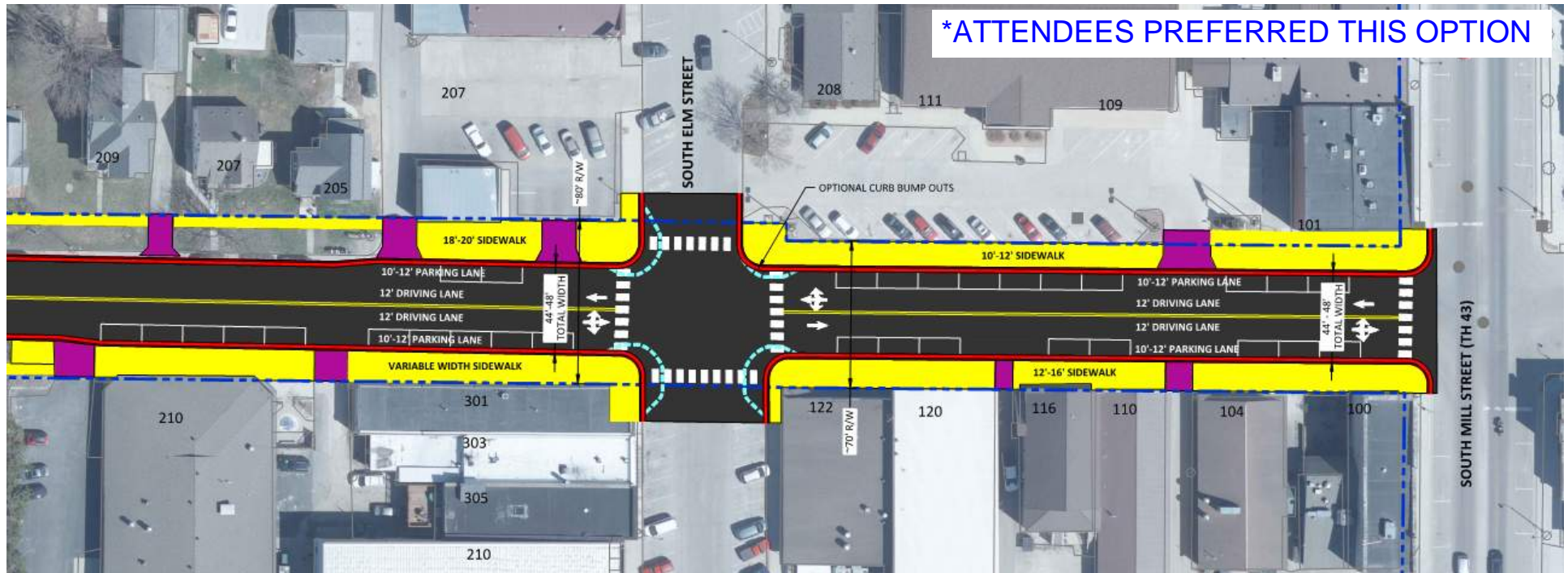


# *Downtown Existing Conditions*

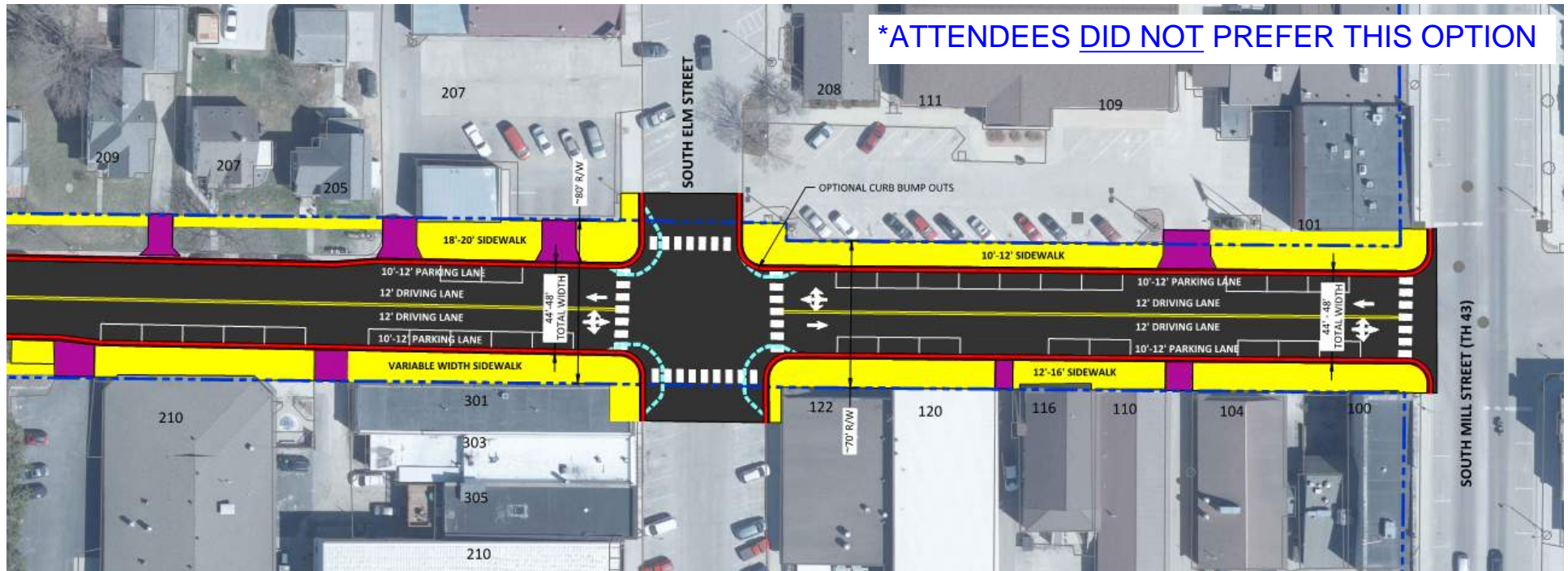




# *Downtown Design Options (48' Width)*

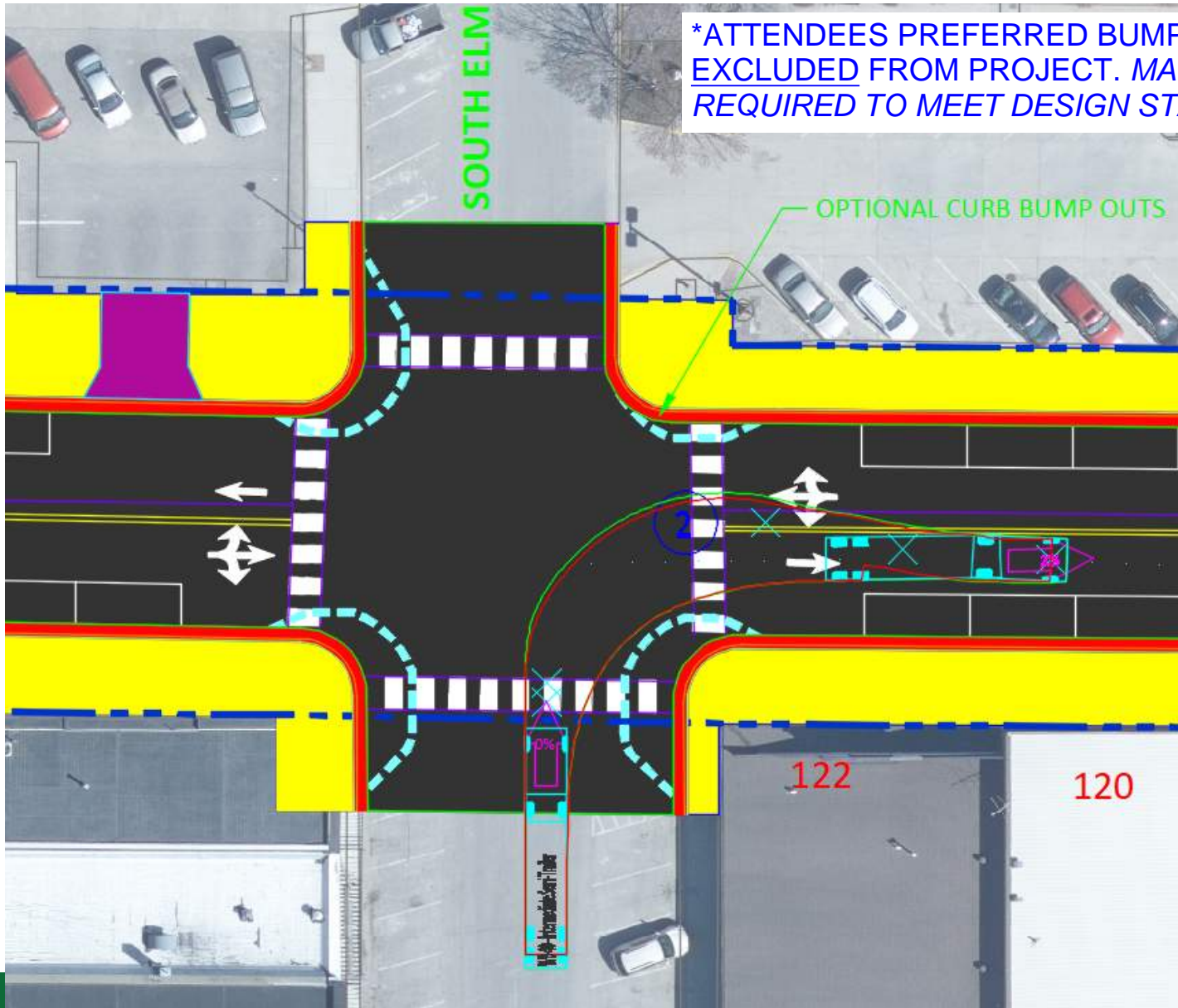


# *Downtown Design Options (44' Width)*





## *Downtown Design Options (Bumpouts)*



# Assessment Policy

- City's Special Assessment Policy
  - Street Improvements 30% Assessable, 70% City
  - Water and Sanitary Imp. 30% Assessable, 70% City
  - Storm Sewer Improvements 0% Assessable, 100% City Cost
  - Sidewalks 100% Assessable, 0% City Cost
  - Corner Lots 100% frontage, 50% side
  - Surface Improvements – Frontage Basis
  - Utility Improvements – Per Each Basis
- Only City's Share of Cost Assessable
- Final Assessments TBD after bidding (2022)
- Following Assessments Are Estimated (WILL CHANGE)



# Estimated Assessments

- Preliminary Assessment Rates
  - Street & Walk (Downtown) ~\$96/Foot
  - Sanitary Sewer & Service ~\$2,450/Each
  - Watermain & Service ~\$3,030/Each
- Average Downtown Lot
  - 50' of Frontage, Sidewalk, Sanitary & Water Service
  - Average Lot Total Estimated Assessment ~\$10,270
  - Larger Lots = Increased Cost
  - Smaller Lots = Decreased Cost
- Street Width
  - Above Based on 44' Street
  - 48' Street will increase assessment ~\$200 (50' Lot)
  - 50'-54' Street increase assessment ~\$750 - \$1,750 (50' Lot)
    - For Information Only, Street Widths >48' Unfeasible





# Discussion



Please Remember to:

- Sign in
- Provide Contact Info
- Provide Comments