

City of Rushford



Real People. Real Solutions.

Trunk Highway 30 Reconstruction Project Construction Newsletter

Newsletter No. 12 – Oct. 7, 2022

Construction Includes:

Street Reconstruction & Lighting
Sanitary Sewer Main & Services
Water Main & Services
Storm Sewer

Construction Schedule:

Start Phase 1:

May 9, 2022

Following times subject to change

Start Phase 2:

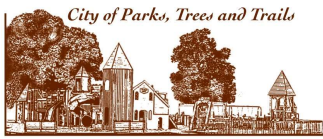
July 11, 2022

Re-Open Phase 1:

Sept 2, 2022

Re-Open Phase 2:

Late October 2022 (estimated)



City of Rushford



DEPARTMENT OF
TRANSPORTATION

Rushford City Engineer

Derek Olinger, P.E.

Rushford City Engineer

Cell: (507) 525-2685

E-mail: derek.olinger@bolton-menk.com

MnDOT

Mark Anderson, P.E.

MnDOT District 6, Resident Engineer

Phone: (507) 429-6302

Email: mark.w.anderson@state.mn.us

Dunn Blacktop (General Contractor)

Jayne LaPlante

Phone: (507) 252-3466

Email: jayne.laplante@rochsg.com

Hwy 30 Construction Update

Underground work within the 2nd phase of TH 30 is now substantially completed and over the coming week, crews will be preparing the remainder of road to the west end of the project with sand and gravel base.

Concrete curb and sidewalk work has already begun and this work will continue as the remaining surfaces are prepared on the west end. Final paving is currently expected to occur at the end of the month.

West End Access & Parking

As crews focus their efforts on the west end of the project, please note that **access to Southview Terrace will be intermittently switching between Hwy 30 (from the west) and Bluffview Road as required to accommodate work.** Please watch for notices and be mindful of signage.

Concrete Work

Below are a few reminders regarding concrete curb, driveways, and walks. Prior to any work you may notice stakes, stringlines, and forms. **It is very important that these remain undisturbed.** If you need assistance navigating around these devices, please contact us.

After concrete is placed, wet concrete can sometimes be indistinguishable from dry concrete. As a best practice, **please do not walk on any concrete that you are seeing for the first time.** You may walk on concrete after 24 hours and drive after 7 days.

Garbage Pick-up

We have received several complaints about forgotten garbage/recycling pick-up in the past week. In order to make this process easier, **please set out your bins out by Monday morning and allow till Tuesday evening for bins to be returned.** If you are missing a bin, please contact Grayson at the number below.

Contacts

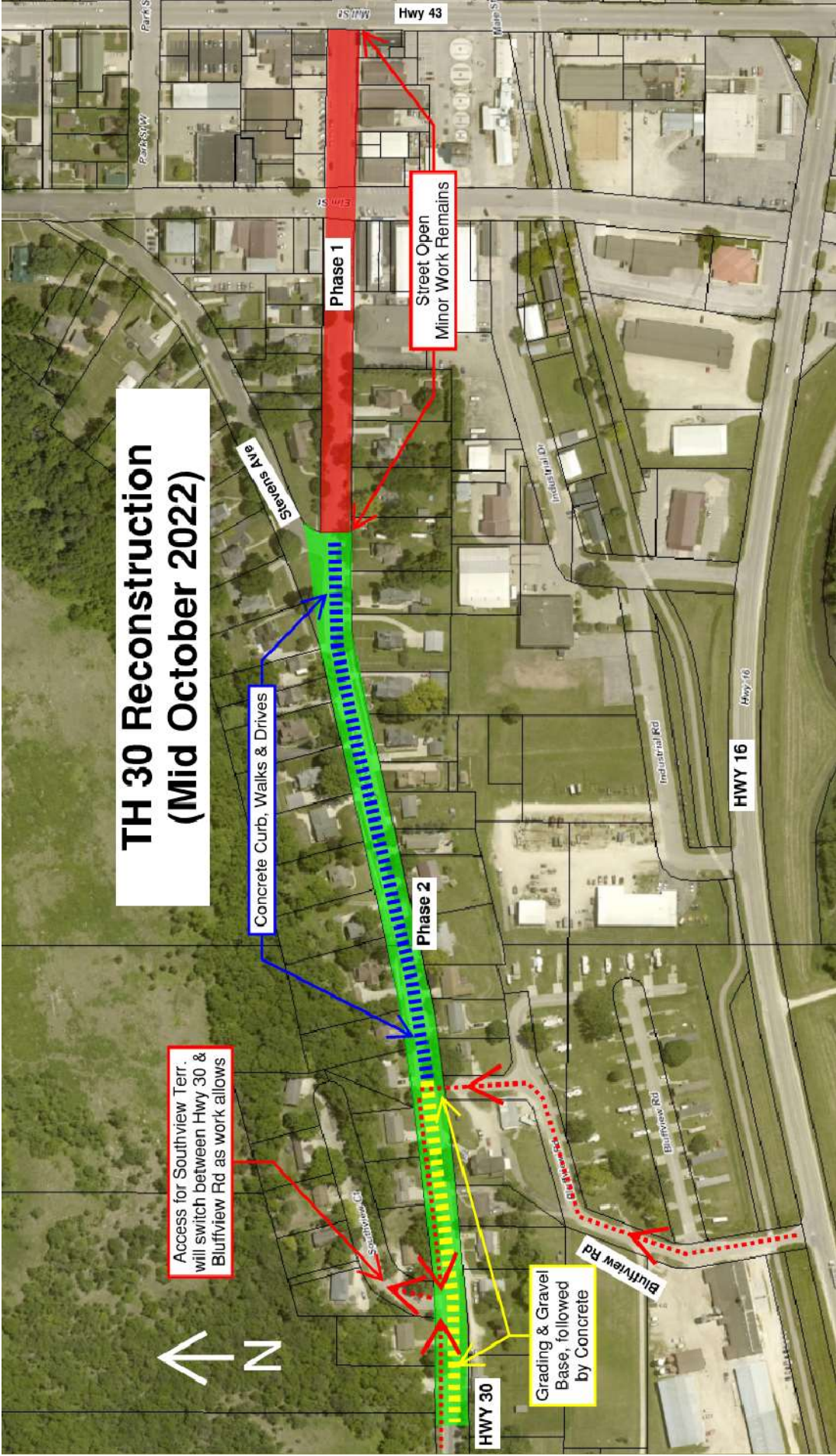
If there are any questions, please contact our on-site representative Grayson Gavin at 507-721-9087 or Grayson.gavin@bolton-menk.com. As questions arise during construction, he will be able to provide you with a timely response.

Project Website

Additional information about the project can be found on the project websites:

- <https://www.bolton-menk.com/client-sites/rushfordth30/>
- <https://www.dot.state.mn.us/d6/projects/hwy30-rushford/index.html>

TH 30 Reconstruction (Mid October 2022)



Phase 1
Street Open
Minor Work Remains

Concrete Curb, Walks & Drives

Phase 2

Access for Southview Terr.
will switch between Hwy 30 &
Bluffview Rd as work allows

Grading & Gravel
Base, followed
by Concrete



HWY 30

HWY 43

HWY 16

Park S

Park SW

Em St

Stevens Ave

Industrial Dr

Industrial Rd

Bluffview Rd

Southview Ct

HWY 16