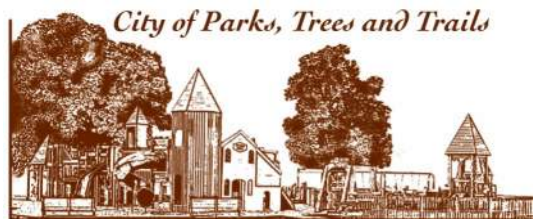


# City of Rushford

*City of Parks, Trees, and Trails*

## TH 30 Street & Utility Improvements Public Information Meeting

April 26th, 2022

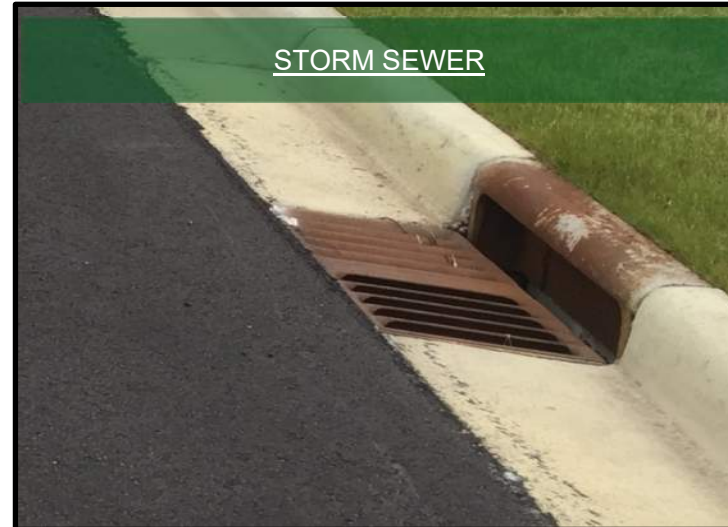
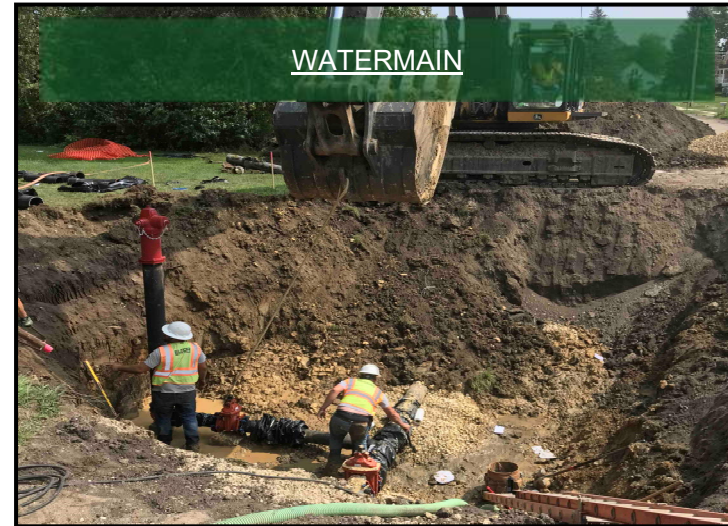


City of Rushford



# Improvement Summary:

## Reconstruction: Utilities, Street, Sidewalk



# Project Cost Summary

<u>Project Component</u>	<u>Total Project Cost</u>	<u>State Share</u>	<u>Assessable City Share</u>	<u>% Assessable</u>
Street (Residential)	\$2,045,755.27	\$1,689,717.23	<b>\$320,434.24</b>	<b>30%</b>
Street (Downtown)	\$651,748.60	\$535,121.45	<b>\$116,627.14</b>	<b>30%</b>
Sidewalk (Residential)	\$552,232.23	\$430,463.82	<b>\$121,768.41</b>	<b>100%</b>
Sidewalk (Downtown)	\$283,364.22	\$231,788.21	<b>\$51,576.01</b>	<b>100%</b>
Existing Street Lighting	\$53,061.71	\$0.00	<b>\$53,061.71</b>	<b>0%</b>
Downtown Decorative Lighting	\$204,941.50	\$68,894.75	<b>\$136,046.76</b>	<b>0%</b>
Storm Sewer	\$792,261.84	\$627,054.00	<b>\$165,207.84</b>	<b>0%</b>
Sanitary Sewer	\$462,886.75	\$0.00	<b>\$462,886.75</b>	<b>30%</b>
Sanitary Services (Mill St to Elm St)	\$23,386.05	\$0.00	<b>\$23,386.05</b>	<b>30%</b>
Water System	\$678,592.83	\$0.00	<b>\$658,030.69</b>	<b>30%</b>
Right-of-Way	\$141,100.00	\$0.00	<b>\$141,100.00</b>	<b>0%</b>
<b>Project Total</b>	<b>\$5,889,330.99</b>	<b>\$3,583,039.46</b>	<b>\$2,250,125.59</b>	

Assessment Calculation Method	
Project Component	Distribution of Assessments
Street	Adjusted Front Foot Method <sup>1</sup>
Sidewalk	Adjusted Front Foot Method <sup>1</sup>
Sanitary Sewer	Unit Method <sup>2</sup>
Water System	Unit Method <sup>2</sup>

1 Adjusted Front Footage = (100% x front property width) + (50% x side property width)

2 Unit = 1 per connected lot

3 Additional adjustments may apply for oddly shaped lots or circumstances where water or sanitary sewer services are larger than the typical residential lot.



# Final Assessments

Assessment Rates		
Project Component	Final Assessment	Unit
Street Improvements (Residential)	\$20.66	per Ft
Street Improvements (Downtown)	\$27.12	per Ft
Sidewalk Improvements (Residential)	\$33.72	per Ft
Sidewalk Improvements (Downtown)	\$39.98	per Ft
Sanitary Sewer Improvements	\$3,229.44	per Lot
Sanitary Services (Mill St to Elm St)	\$701.58	per Lot
Water System Improvements	\$3,589.26	per Lot

Typical Total Assessment (with Sanitary & Water Services)	
Example 100' Residential Lot	Example 50' Downtown Lot
\$12,256.00	\$10,173.90

*Detailed assessment roll available for viewing*



# Assessment Payment

- Prepayment
  - Full Payment by 11/30/22 – no interest
  - Partial Payment by 11/30/22 – remainder goes on 2023 taxes with interest
- Certified to 2023 Taxes
- 10 Years, 3.3% interest
- Deferment options (contact City Hall)



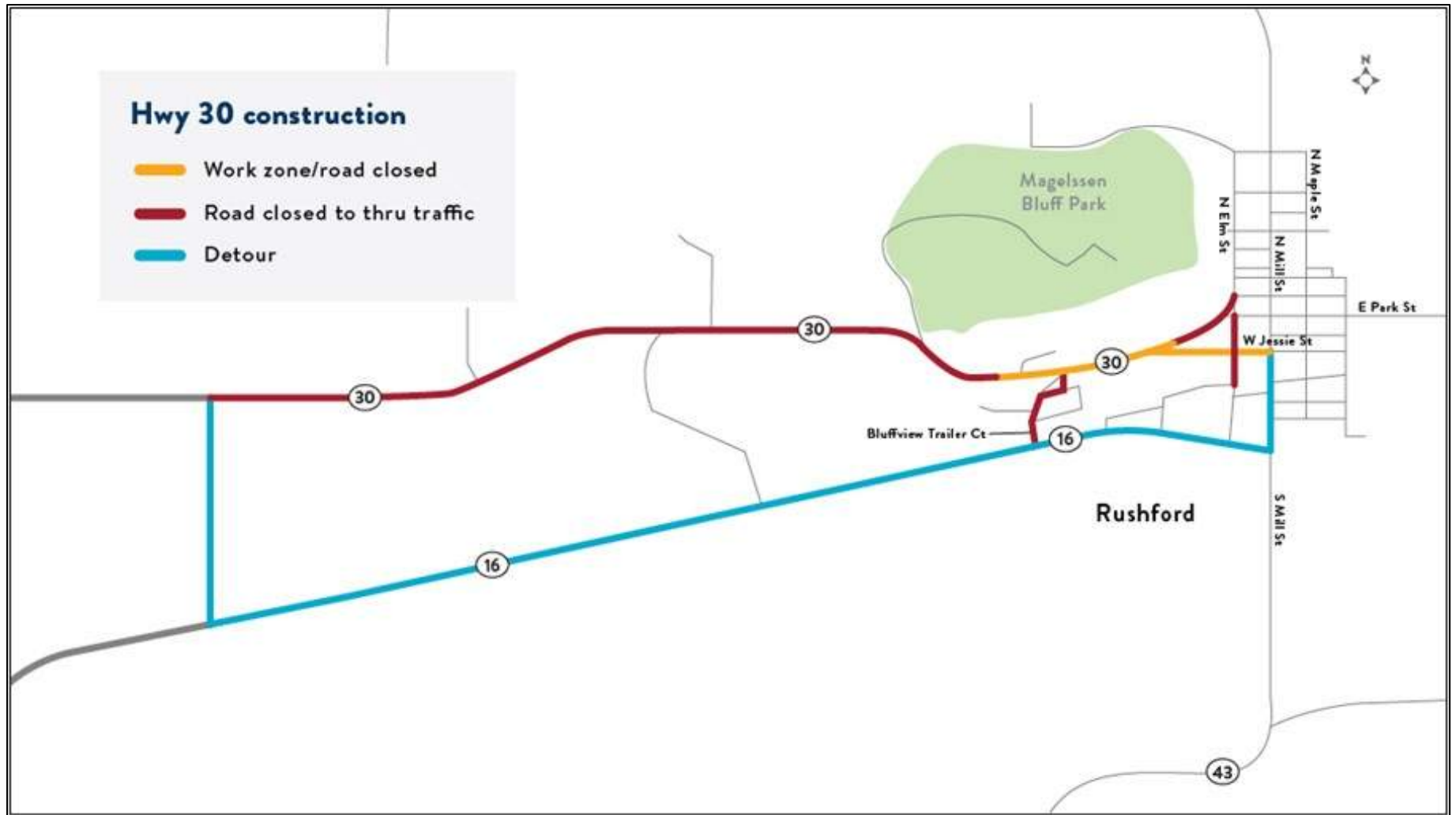
# Construction Schedule

2022																					
May				June				July			August				September			October			
	PHASE 1 (Mill/Hwy 43 to W Stevens Ave)																				
	Removals, Underground & Grading								Pave/ Cleanup	Buffer									Pave		
										PHASE 2 (W Stevens Ave to West End)											
										Removals, Underground & Grading						Pave/Cleanup			Buffer		

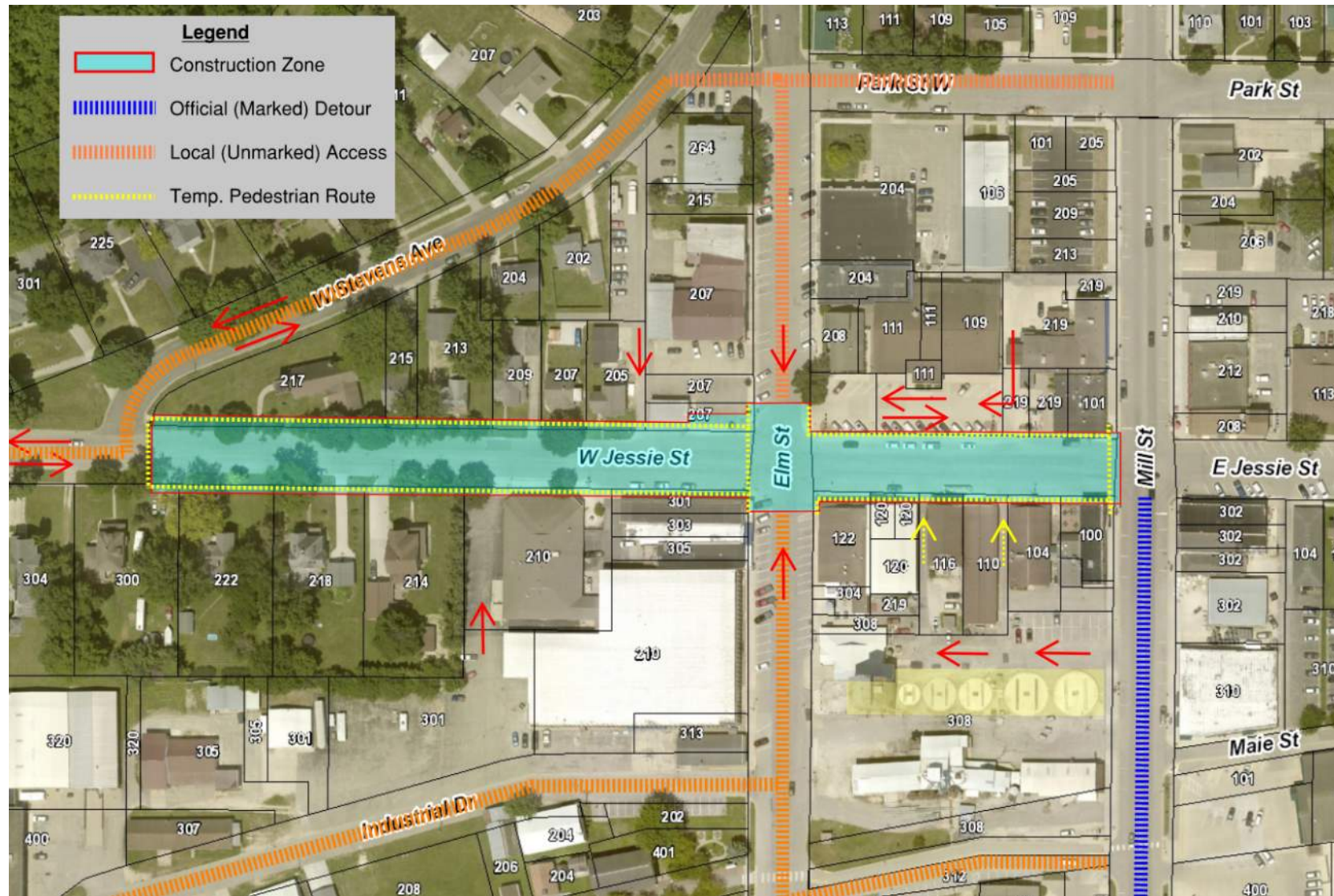
*Construction schedule above is tentative. Schedules can and will change on short notice.*



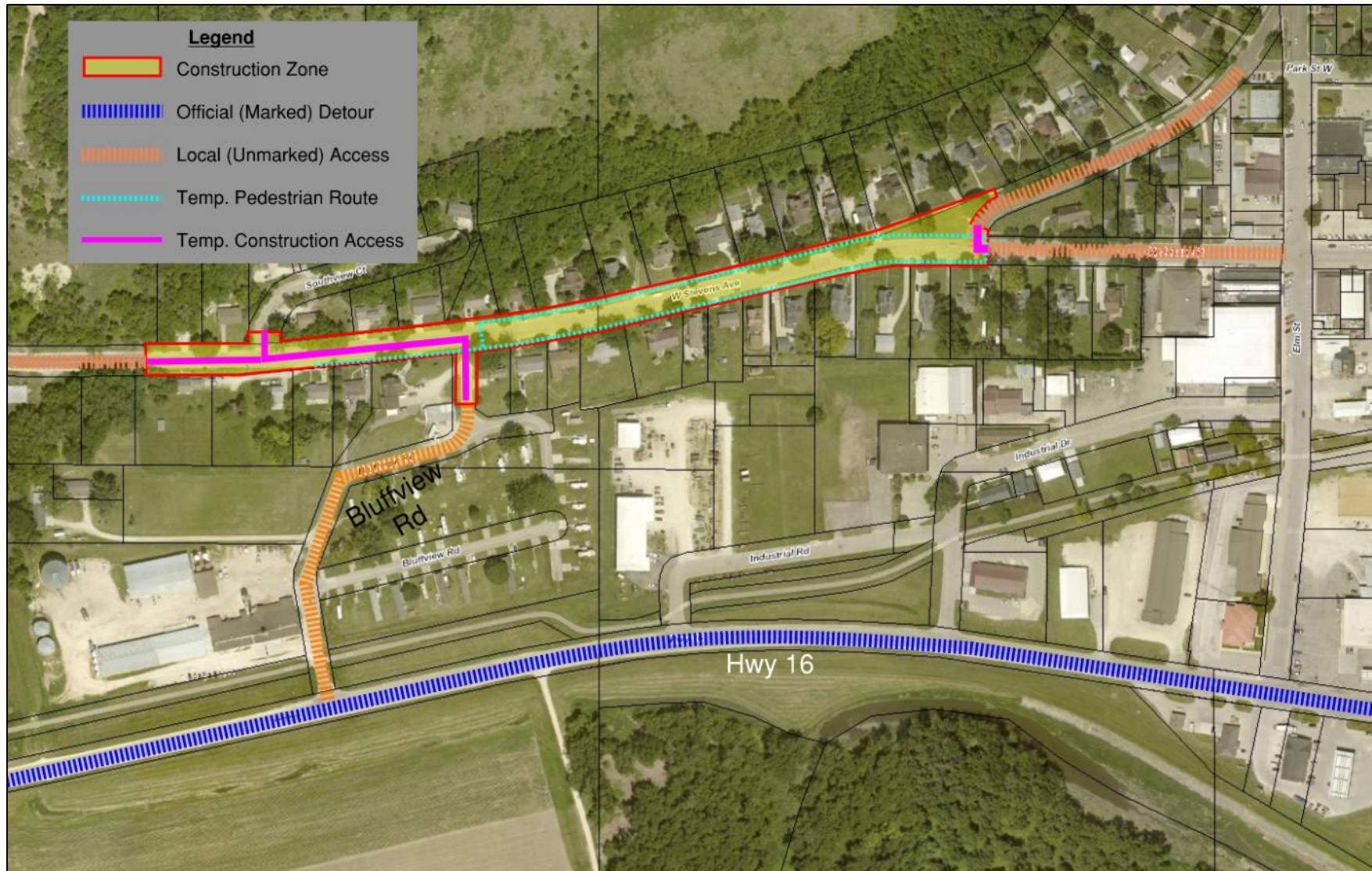
# Official Detour



# Local Access – Phase 1



# Local Access – Phase 2

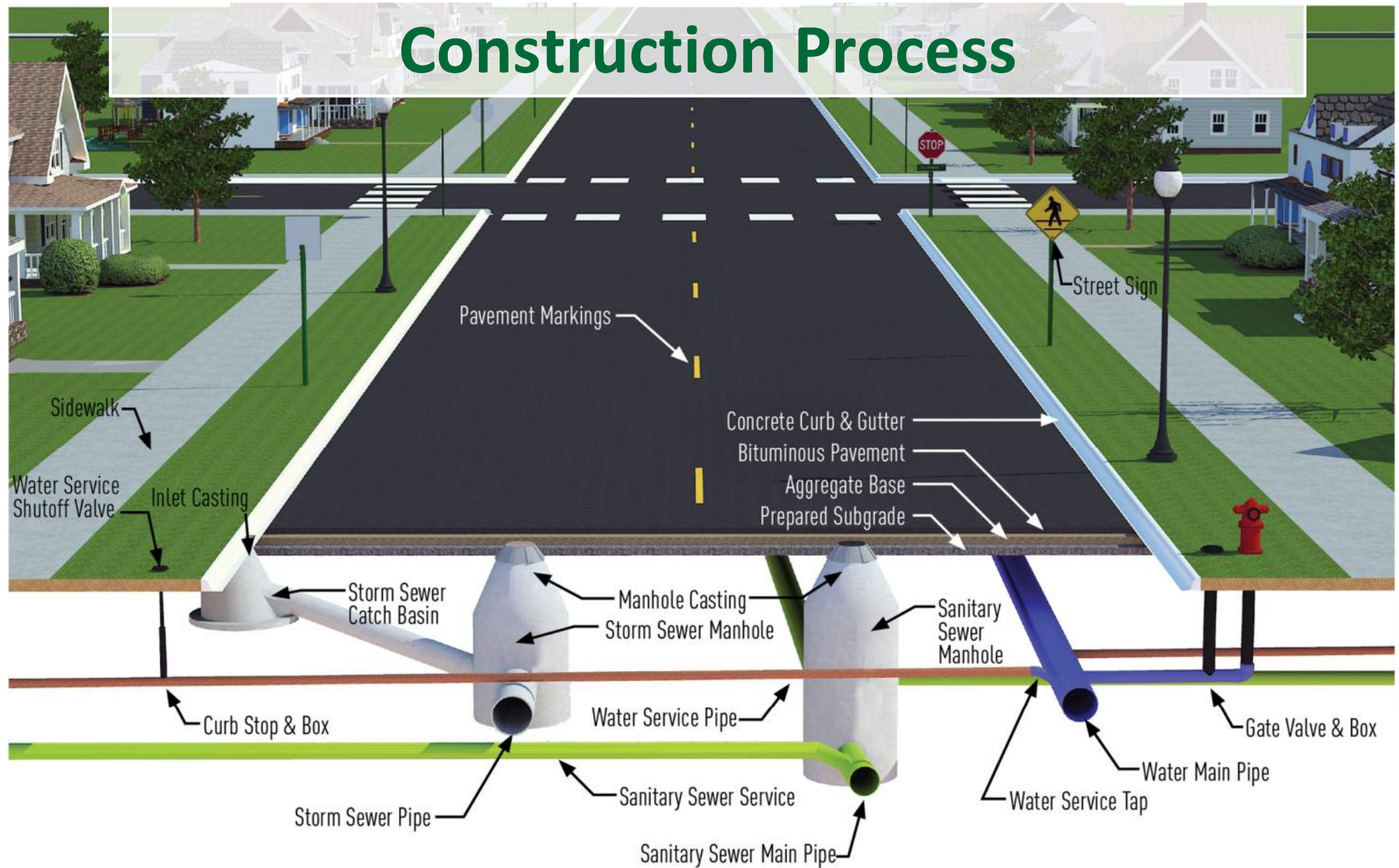


A photograph of a construction site. In the foreground, a large pile of brown earth is being excavated. A grey Volvo excavator is positioned on the left, and a yellow excavator is on the right. Two workers in safety vests are standing near the base of the pile. In the background, a two-story house with grey siding and red window frames is visible. The sky is clear and blue.

# Life During Construction



# Construction Process



# Life During Construction

## Access Issues

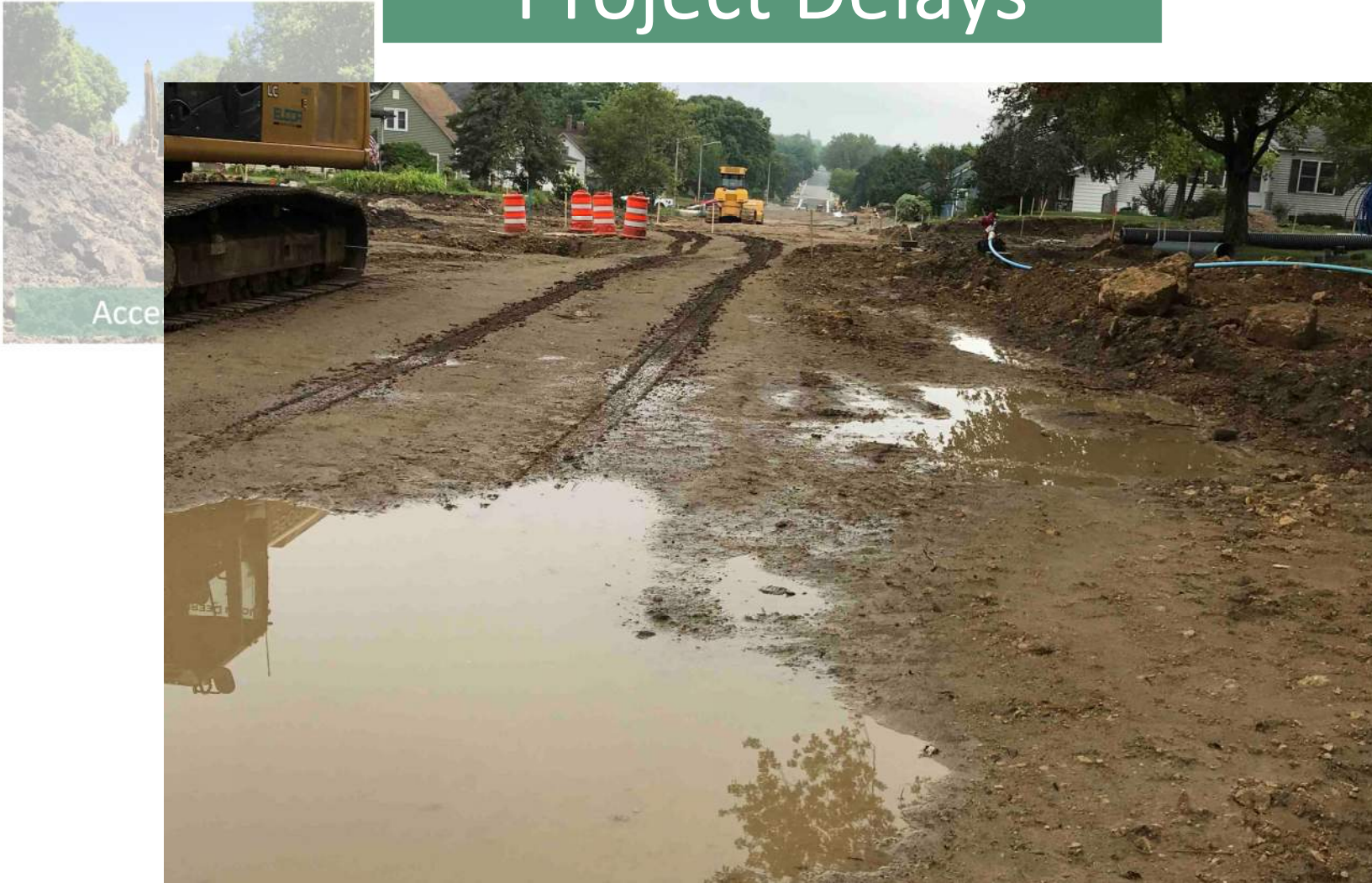


- Excavation
- Backfill
- Weather
- Curb & Gutter
- Special Requests



# Life During Construction

## Project Delays

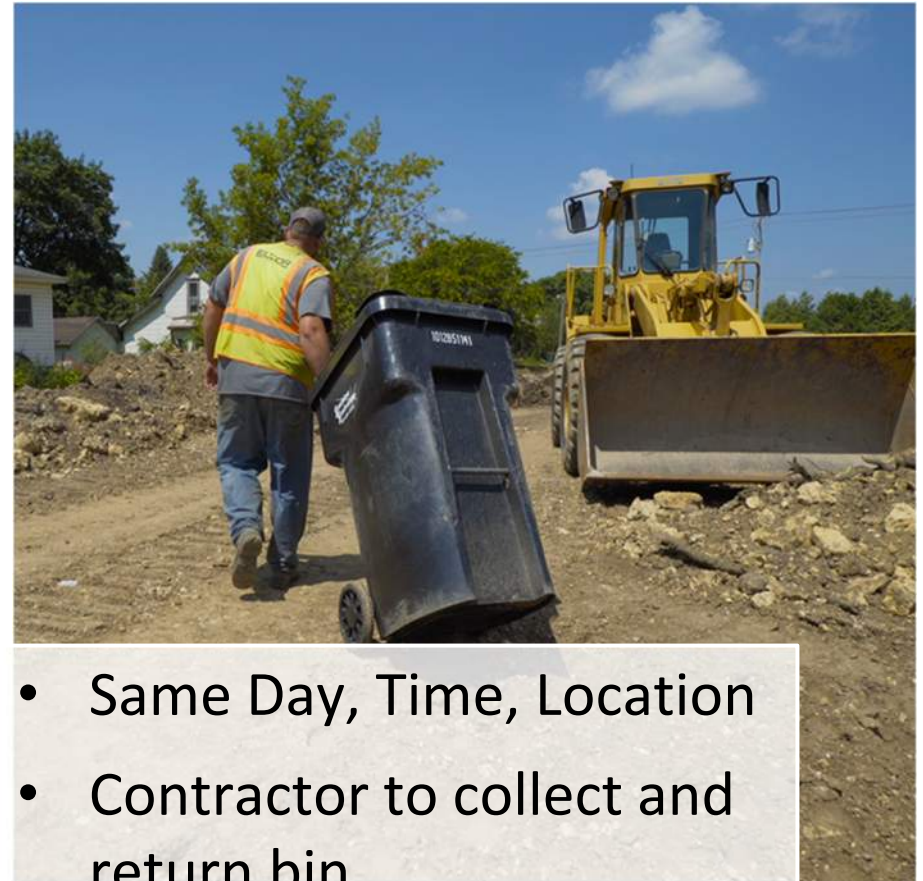


# Life During Construction

## Garbage/Recycling & Mail Delivery



- Remove/Reinstall
- Temporary mailboxes
- Location will be provided in newsletter



- Same Day, Time, Location
- Contractor to collect and return bin



# Life During Construction

## Water Service



- Temporary Water

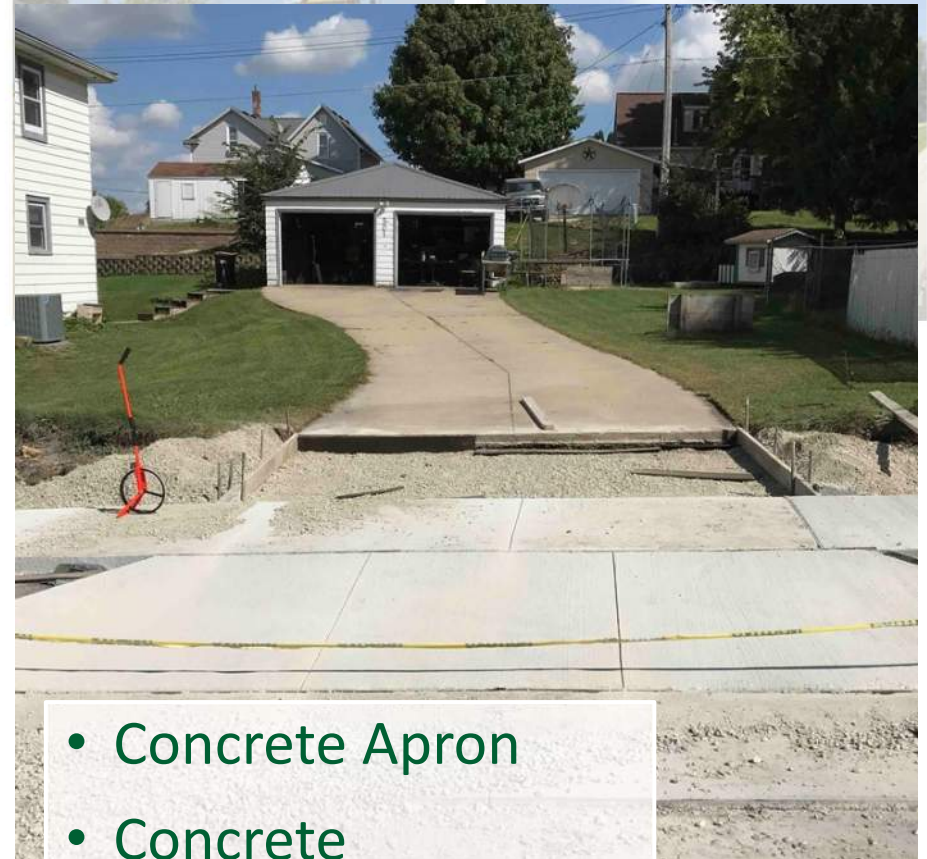


# Life During Construction

## Sidewalks & Driveways



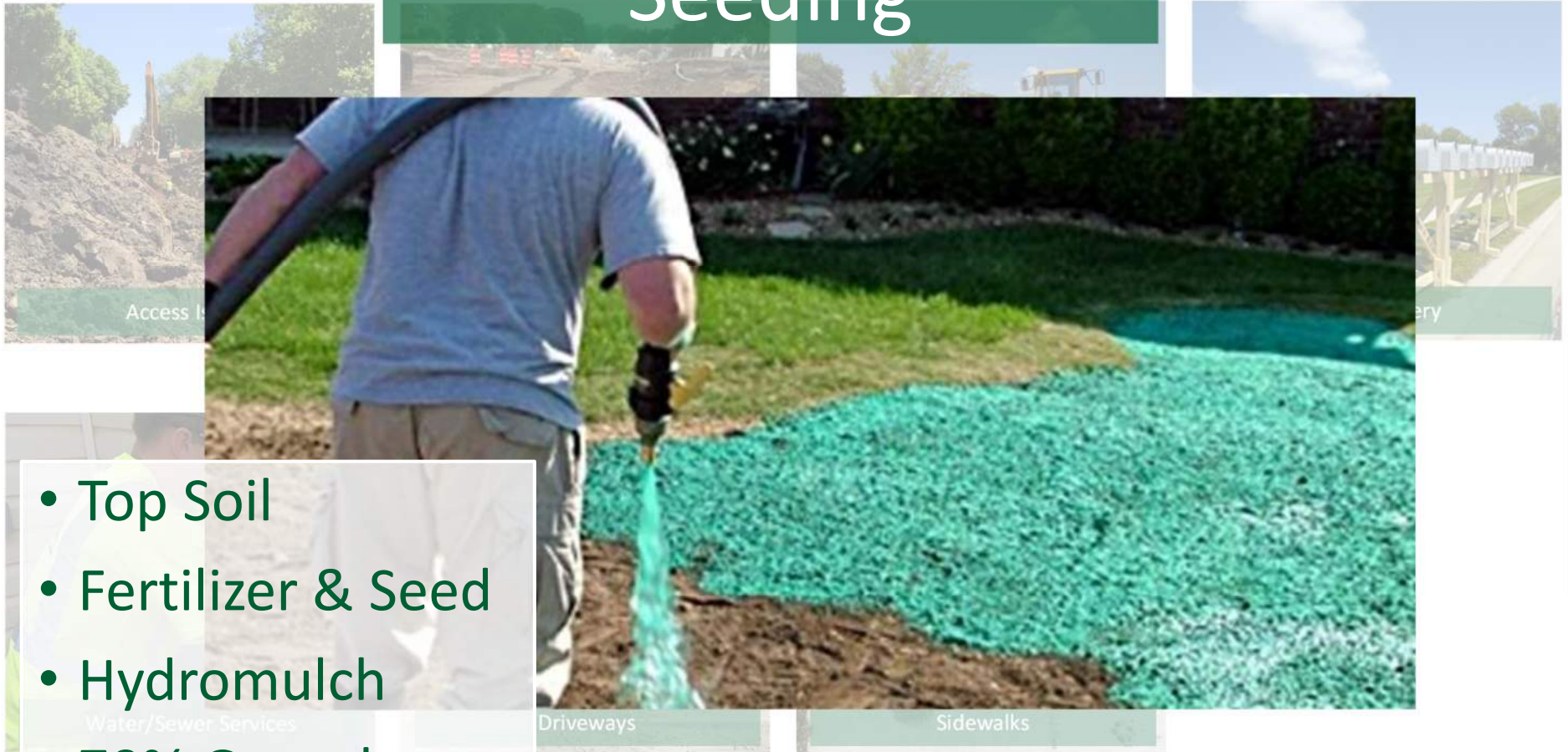
- Curing



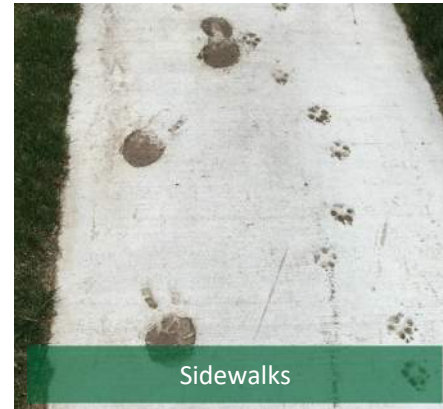
- Concrete Apron
- Concrete
- Bituminous/Asphalt

# Life During Construction

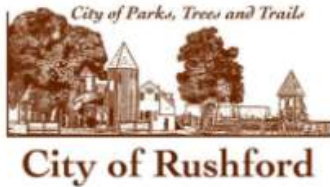
## Seeding



# Life During Construction



# Construction Communication: Newsletter



## Trunk Highway 30 Reconstruction Project Construction Newsletter

Newsletter No. 1 - April 15, 2022

### Construction Includes:

Street Reconstruction & Lighting  
Sanitary Sewer Main & Services  
Water Main & Services  
Storm Sewer

### Construction Schedule:

#### **Start Phase 1:**

May 9, 2022

#### **Following times subject to change**

#### **Start Phase 2:**

June 2022

### **Phase 1 Construction Starts May 9**

The first phase of construction for the Highway 30 project is starting on May 9<sup>th</sup>. The work area will be located between Mill Street and Stevens Avenue. **See the attached map.**

### **Anticipated Work & Impacts**

Between May 9<sup>th</sup> and May 20<sup>th</sup>, work will include the following

- Removing street surfaces (blacktop, curb, portions of walk)
- Setup for temporary water service
- Excavating Street
- Starting Utility Work (from east to west)



# Construction Communication: Project Website

<https://www.bolton-menk.com/client-sites/rushfordth30/>

## City of Rushford – TH 30 Reconstruction Website

View all client sites

NAVIGATION

OVERVIEW

PROJECT LOCATION\_11-9-21

RUSHFORD CONSTRUCTION  
UPDATES AND NEWSLETTERS

RUSHFORD PUBLIC  
MEETINGS

RUSHFORD MAPS &  
DOCUMENTS

COMMENTS/QUESTIONS?

RUSHFORD TENTATIVE  
SCHEDULE

### Overview

The City of Rushford and the Minnesota Department of Transportation (MnDOT) are planning for the reconstruction of Trunk Highway (TH) 30 (Stevens Avenue & Jessie Street) between the western city limits and the intersection with TH 43 (Mill Street).

The project is currently in the concept layout phase. During the winter of 2019/20, the project team will be holding several public meetings to gather feedback on potential layout alternatives. Following selection of the preferred alternative, final design will begin in the summer of 2020. Construction is currently scheduled for the summer of 2022.

Improvements will include replacement and potential modifications to street pavement, curb and gutter, and sidewalk. In addition to the surface work, utility work will include the replacement of existing watermain and services, sanitary sewer mains and services, and storm sewer. Total project costs are currently estimated at approximately \$5.3 million. Funding for the project will be split between the State and City.



### MnDOT's Project Website:

<https://www.dot.state.mn.us/d6/projects/hwy30-rushford/index.html>

(Both links are also on City Website)



# Contact Information

## **On-site City Construction Representative**

(Primary Contact)

Will be provided in future newsletter

### **Derek Olinger, P.E.**

Bolton & Menk, Inc. / Rushford City Engineer

Cell: 507-525-2685

derek.olinger@bolton-menk.com

### **Adam Wellner, P.E.**

MnDOT / Project Engineer

Phone: 507-251-9006

adam.wellner@state.mn.us





# Questions?

