

City of Rushford



Real People. Real Solutions.

Trunk Highway 30 Reconstruction Project Construction Newsletter

Newsletter No. 6.1 – July 1, 2022

Construction Includes:

Street Reconstruction & Lighting
Sanitary Sewer Main & Services
Water Main & Services
Storm Sewer

Construction Schedule:

Start Phase 1:

May 9, 2022

Following times subject to change

Start Phase 2:

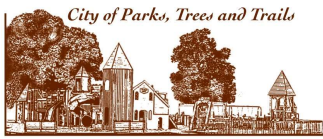
July 11, 2022

Re-Open Phase 1:

Late July 2022

Re-Open Phase 2:

October 2022



City of Rushford



DEPARTMENT OF
TRANSPORTATION

Rushford City Engineer

Derek Olinger, P.E.

Rushford City Engineer

Cell: (507) 525-2685

E-mail: derek.olinger@bolton-menk.com

MnDOT

Adam Wellner, P.E.

MnDOT District 6, Project Engineer

Phone: (507) 251-9006

Email: adam.wellner@state.mn.us

Dunn Blacktop (Contractor)

Jayne LaPlante

Phone: (507) 252-3466

Email: jayne.laplante@rochsg.com

Hwy 30 Construction Update

Residents of Southview Ct:

The highway 30 reconstruction will be moving on to Phase 2 (West End Construction on July 11th). This letter is intended to provide you with pertinent details regarding access to your property.

Initially, the contractor will be removing pavement from the road and the street will be a gravel surface. There may be some temporary losses of water service throughout construction, however these impacts will be minimized and will be very short term (few hours, if needed). You will be notified of any planned outages.

Vehicle Access

During the first few weeks after July 11th, you should be able to access Southview Court via Bluffview Road. Access from town via Stevens Avenue will no longer be available. After several weeks, the underground utility contractor will be getting closer to Southview Court and your access point will be from the west (from Hwy 30). Prior to any change in access points, you will be notified.

Mailboxes

During construction, your mailbox will be temporarily moved to another central location. You will receive a separate notice with this location in a few days.

Garbage

On your normal garbage day, please roll your bin to the normal location. The contractor will be collecting these on the morning of pickup day for collection at a central location. At the end of the day, bins will be returned to your property.

Contacts

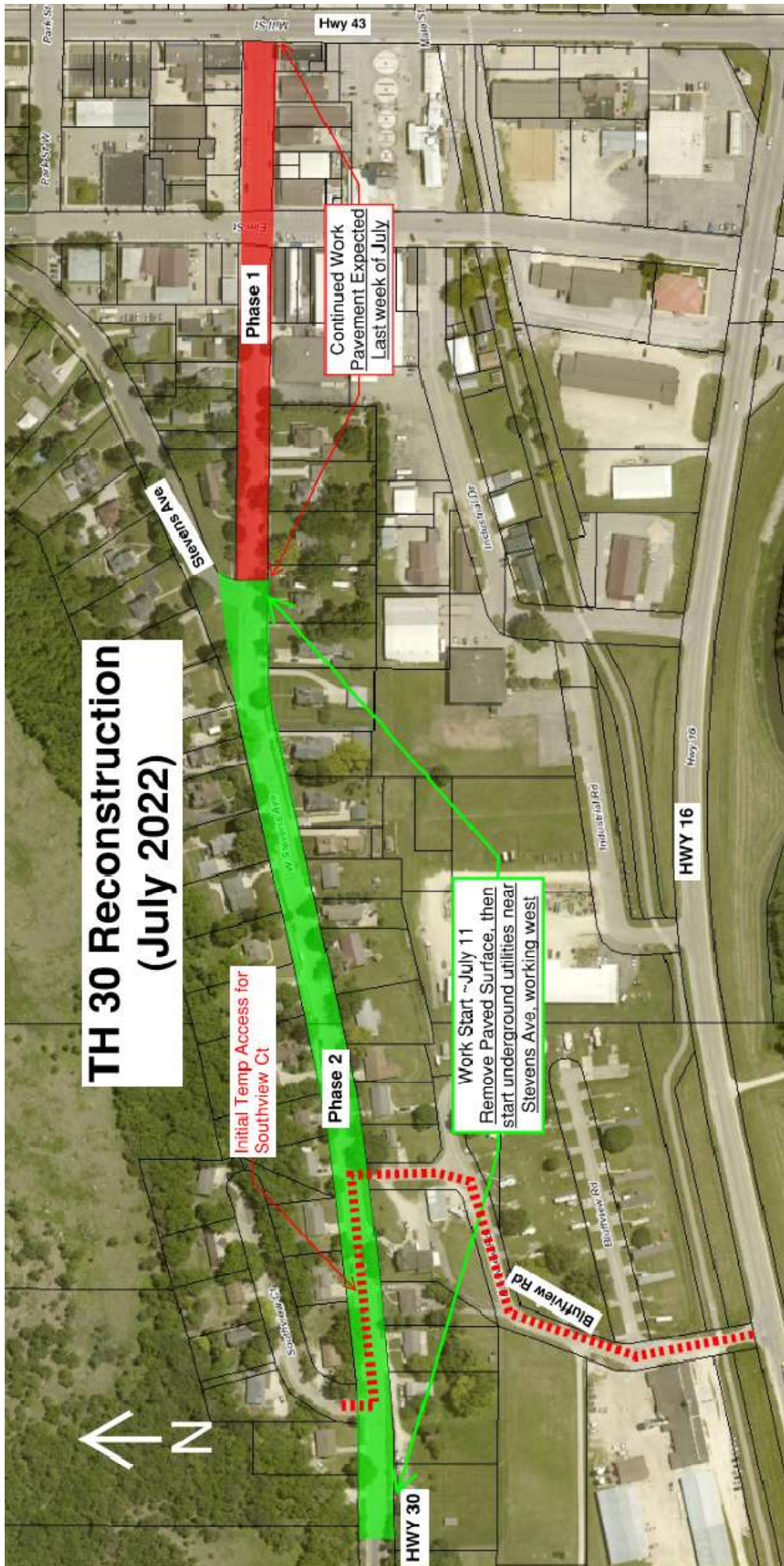
If there are any questions, please contact our on-site representative Grayson Gavin at 507-721-9087 or Grayson.gavin@bolton-menk.com. As questions arise during construction, he will be able to provide you with a timely response.

Project Website

Additional information about the project can be found on the project websites:

- <https://www.bolton-menk.com/client-sites/rushfordth30/>
- <https://www.dot.state.mn.us/d6/projects/hwy30-rushford/index.html>

TH 30 Reconstruction (July 2022)



Initial Temp Access for Southview Ct

Phase 2

Work Start ~July 11
Remove Paved Surface, then
start underground utilities near
Stevens Ave, working west

Continued Work
Pavement Expected
Last week of July

Phase 1



HWY 30

HWY 16

HWY 43

Stevens Ave

Bluffview Rd

Industrial Rd

Ernst St

Main St

Parish St

Parish St W

151st St W

Southview Ct

W Southview Ave

Industrial Dr

Hwy 35