

City of Rushford



Real People. Real Solutions.

Trunk Highway 30 Reconstruction Project Construction Newsletter

Newsletter No. 7 – July 15, 2022

Construction Includes:

Street Reconstruction & Lighting
Sanitary Sewer Main & Services
Water Main & Services
Storm Sewer

Construction Schedule:

Start Phase 1:

May 9, 2022

Following times subject to change

Start Phase 2:

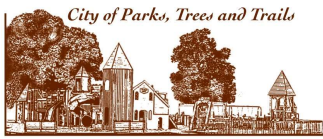
July 11, 2022

Re-Open Phase 1:

Late July 2022

Re-Open Phase 2:

October 2022



City of Rushford



DEPARTMENT OF
TRANSPORTATION

Rushford City Engineer

Derek Olinger, P.E.

Rushford City Engineer

Cell: (507) 525-2685

E-mail: derek.olinger@bolton-menk.com

MnDOT

Adam Wellner, P.E.

MnDOT District 6, Project Engineer

Phone: (507) 251-9006

Email: adam.wellner@state.mn.us

Dunn Blacktop (Contractor)

Jayne LaPlante

Phone: (507) 252-3466

Email: jayne.laplante@rochsg.com

Hwy 30 Construction Update

The highway 30 reconstruction has moved on to Phase 2 Construction. Within Phase 2, the area between Stevens and Bluffview will be closed while utility pipe is installed. This work will continue for several weeks. Phase 1 work includes grading, concrete and paving and this work should be completed in the next few weeks.

Temporary Water

Houses between Bluffview Road and Stevens Avenue will be switched to temporary water service in the next few days. The contractor will be contacting you and may need to access your home.

Vehicle Access

- Downtown (Mill to Stevens): Continued Closure, Partial Access Will likely be available in a few weeks.
- Stevens To Bluffview: Road is now closed until contractor completes underground/pipe construction. Please use adjacent side streets (Stevens, Bluffview) for Parking. Residents may also park on in the gravel area of Hwy 30, west of Bluffview.
- Bluffview to West: Road in gravel. May access via Hwy 30 (from west) or Bluffview Road.

Mailboxes

During construction, your mailbox will be temporarily moved to another central location. A separate notice has been sent out for mailbox locations.

Garbage

On your normal garbage day, please roll your bin to the normal location. The contractor will be collecting these on the morning of pickup day for collection at a central location. At the end of the day, bins will be returned to your property.

Contacts

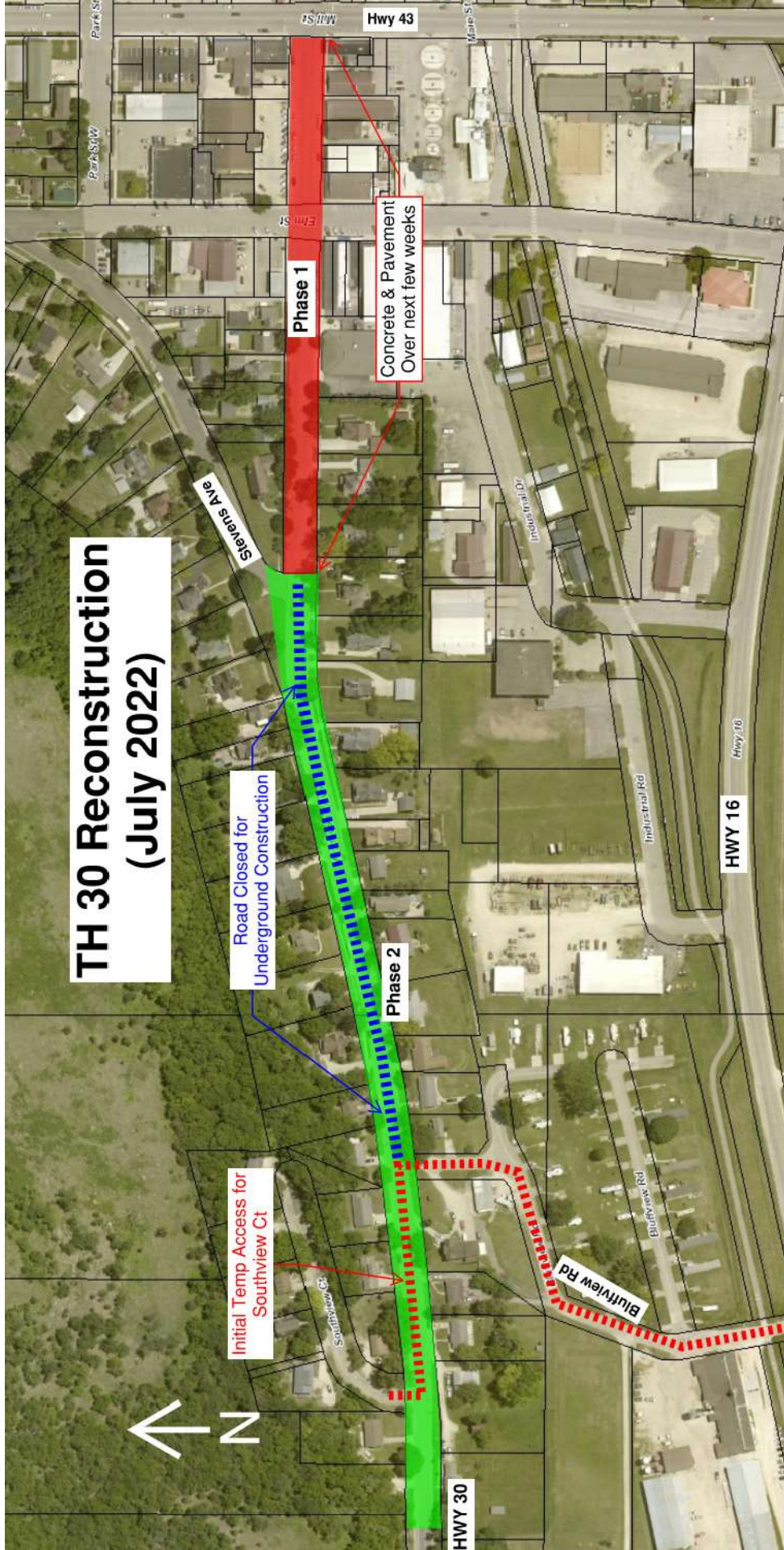
If there are any questions, please contact our on-site representative Grayson Gavin at 507-721-9087 or Grayson.gavin@bolton-menk.com. As questions arise during construction, he will be able to provide you with a timely response.

Project Website

Additional information about the project can be found on the project websites:

- <https://www.bolton-menk.com/client-sites/rushfordth30/>
- <https://www.dot.state.mn.us/d6/projects/hwy30-rushford/index.html>

TH 30 Reconstruction (July 2022)



Phase 1

Hwy 43

Hwy 16

Hwy 30

Stevens Ave

Bluffview Rd

Concrete & Pavement
Over next few weeks

Road Closed for
Underground Construction

Initial Temp. Access for
Southview Ct

Phase 2

